

the Field Guide

2020

a guidebook to New Mexico
arts + culture

Art Districts

Galleries

Museums

Design

Performing Arts

Organizations

Art Services

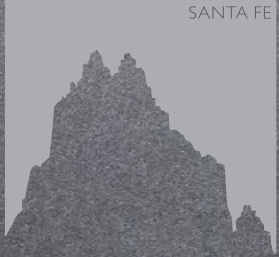
Creative Professionals

Events

Southwest
Contemporary

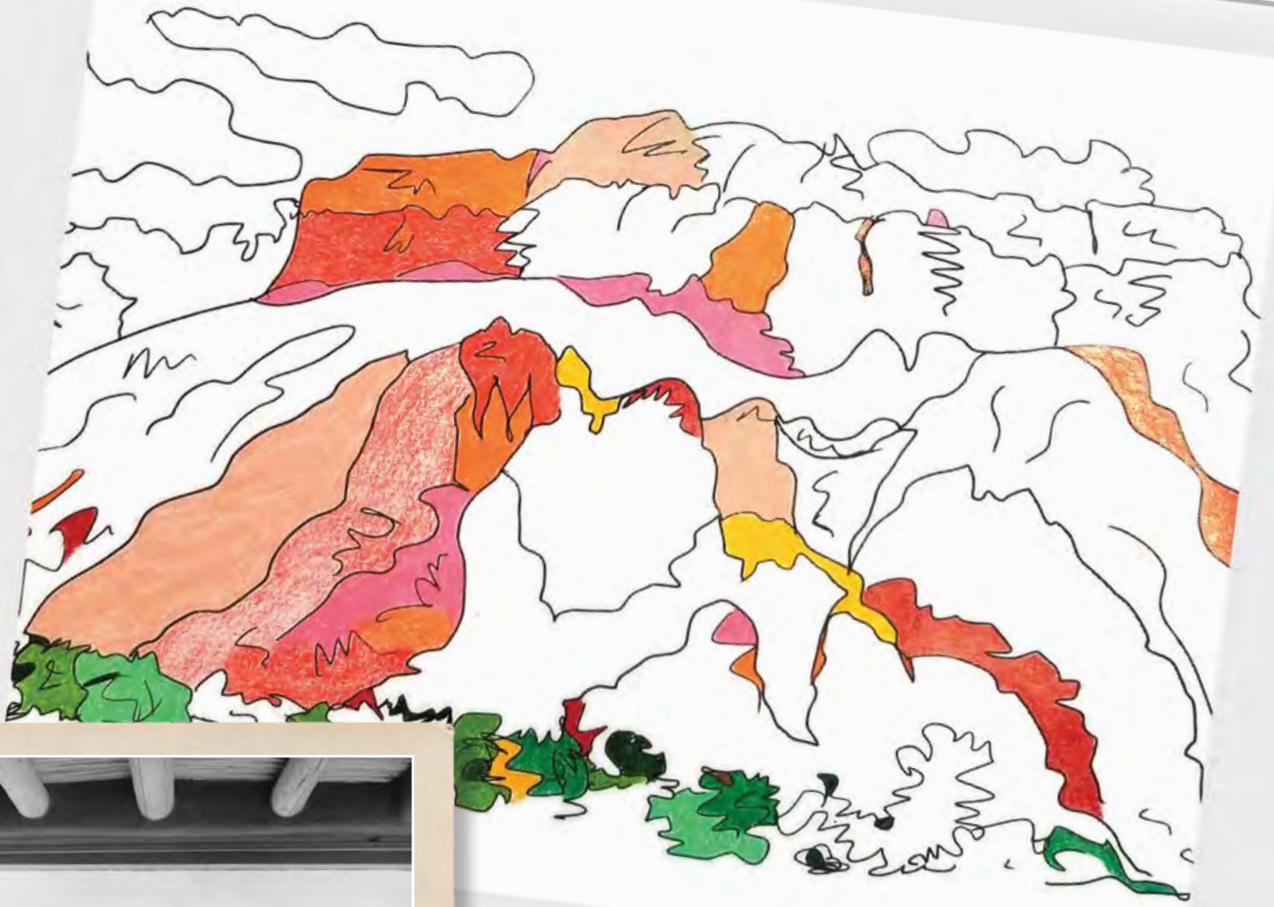


SHIPROCK
SANTA FE



53 Old Santa Fe Trail | Upstairs on the Plaza | Santa Fe, NM
505.982.8478 | shiprock santafe.com

Tony Vaccaro. Georgia Caring for Her Herb Seedlings, 1960. Gelatin silver print, 19 5/8 x 13 1/4 in.
Georgia O'Keeffe Museum. Georgia O'Keeffe Museum. © Tony Vaccaro. [2007.3.11]



O'Keeffe from Anywhere

Connect with the Museum online and discover the many facets of Georgia O'Keeffe. Creative activities, online events, O'Keeffe's life and art, and Stories from the O'Keeffe can all be found at gokm.org. Engage with us on Facebook and Instagram, too!

We hope to see you soon.

Georgia O'Keeffe Museum

Visit gokm.org to confirm hours of operation for all events and sites.

At the heart of UNM's Center *for* the Arts



the Field Guide 2020

by Southwest Contemporary

TEXTS

LETTER

— p. 05

VIRTUAL UNTIL FURTHER NOTICE

— p. 12

ANNIVERSARIES

— p. 14

LISTINGS

ALBUQUERQUE

— p. 18

SANTA FE CANYON ROAD

— p. 20

SANTA FE DOWNTOWN

— p. 22

SANTA FE MIDTOWN

— p. 26

SANTA FE RAILYARD

— p. 30

TAOS

— p. 34

OTHER GALLERIES / DEALERS

— p. 36

ART ORGANIZATIONS

— p. 38

ART SERVICES

— p. 40

CREATIVE PROFESSIONALS

— p. 42

FEATURED NEW MEXICO ARTISTS

— p. 45

CALENDAR

ART CALENDAR

— p. 50



COVER ARTIST: Natalie Christensen

Natalie Christensen has shown her work in exhibitions around the world, including London, Berlin, New York, and Los Angeles. She was one of five invited photographers for *The National 2018: Best of Contemporary Photography* at the Fort Wayne Museum of Art and was recently named one of “Ten Photographers to Watch” at the Los Angeles Center for Digital Art. Her photographs are in the permanent collections of museums and institutions, and numerous private collections. Christensen is represented by Turner Carroll Gallery in Santa Fe. When she isn't looking for photos behind forgotten shopping centers, you can find her checking her Instagram feed while hiking the mountains around Santa Fe. nataliechristensenphoto.com.

ABOVE: *Tiniest Membrane*, 2016, archival pigment print on Italian cotton rag.

COVER ART: *Insistent Whispers*, 2019, archival pigment print on Italian cotton rag.



You don't have to leave home
to take in culture.

Explore the best of
our Santa Fe museums online.

nmculture.org



MUSEUM OF INTERNATIONAL FOLK ART

▶ Alexander Girard: A Designer's Universe

NEW MEXICO MUSEUM OF ART

▶ Activities & Resources

MUSEUM OF INDIAN ARTS AND CULTURE

▶ Online Exhibitions

NEW MEXICO HISTORY MUSEUM

▶ Quarantine Diaries

STAY CONNECTED TO CULTURE

Museums, historic sites, and other institutions of the New Mexico Department of Cultural Affairs are bringing their resources, activities, and exhibitions into your home.

Visit our Museums online for updates on safely re-opening our facilities to the public. We look forward to seeing you again.



NEW MEXICO DEPARTMENT OF
CULTURAL AFFAIRS

THE FIELD GUIDE 2020

PUBLISHER + EDITOR

Lauren Tresp

ART DIRECTION

Alex Hanna, Invisible City Designs

Hans Harland-Hue

EDITORIAL ASSISTANT

Daisy Geoffrey

PROOFREADER

Kenji Barrett

CONTRIBUTORS

Maggie Grimason

Tamara Johnson

Angie Rizzo

ADVERTISE

southwestcontemporary.com/advertise

Lauren Tresp, 505-424-7641

lauren@southwestcontemporary.com

DISTRIBUTION

Jimmy Montoya

505-470-0258

info@southwestcontemporary.com

SAY HELLO

info@southwestcontemporary.com

505-424-7641

369 Montezuma Ave, PMB 258

Santa Fe, NM 87501

FIND US ONLINE

southwestcontemporary.com [/swcontemporary](https://www.facebook.com/swcontemporary) [@swcontemporary](https://www.instagram.com/swcontemporary)

One copy of the Field Guide by Southwest Contemporary is available free of charge each month per reader where available in New Mexico. No person may take more than one copy. Additional copies may be purchased for \$7 each. Visit our online store at southwestcontemporary.com or call 505-424-7641.

The Field Guide by Southwest Contemporary is published once per year by Tresp Magazine LLC, 369 Montezuma Ave, #258, Santa Fe, NM 87501. All materials copyright 2020 by Tresp Magazine LLC. All rights reserved. Reproduction of contents is prohibited without written permission from Tresp Magazine LLC. Tresp Magazine LLC is not responsible for the loss of any unsolicited material, liable for any misspellings, incorrect information in its captions, calendar, or other listings submitted. The articles published reflect the opinions of the respective authors and do not represent the views of Tresp Magazine LLC, its publisher, or any of its employees, agents, or distribution venues. Tresp Magazine LLC is not responsible for any claims made by or for copyright infringement by its advertisers, and is not responsible for errors in any advertisement.

FROM THE EDITOR

When I devised the first Field Guide in the latter half of 2019 as a new offering from Southwest Contemporary, I had imagined introducing it under very different circumstances. I was looking forward to launching the Field Guide as a way to usher in a New Mexico summer season full of markets, fairs, festivals, exhibition openings, opera tailgates, and fiestas—entirely devoid of masks and social distancing.

Then, within weeks during March, the world changed. The summer outlook appeared to collapse, and the very business of Southwest Contemporary has been challenged. Despite the obstacles we've faced, and ones that continue to unfold, the arts communities of New Mexico have blazed forward and banded together in new and inspiring ways. Artists, organizations, and creators of all stripes worked to offer art as a salve for our hearts and minds through new digital and experiential initiatives (Read Maggie Grimason's article on a few of these projects on page 12).

Against this backdrop, I'm especially thrilled, then, to introduce this inaugural Field Guide! Against all odds, we pulled together over 150 arts businesses, organizations, and creators spanning the creative industries in northern New Mexico (and a few beyond!) to participate in this new guidebook to New Mexico arts and culture. I envisioned this book to serve and bridge our creative communities, as a resource for locals and visitors alike to navigate, explore, and discover the arts and the infrastructure of creative professionals and organizations that support them.

In the following pages, you'll find maps of some of the major arts districts, listings of destinations including galleries, museums, performing arts venues, arts associations, art services, creative professionals, and more, and a highlight of some major anniversaries to celebrate in 2020. You'll also find a section of featured artists, representing just a few of the thousands of talented contemporary artists that live across the state. Lastly, a calendar section that, while cut short by the effects of the pandemic, features both in-person and virtual events to check out over the coming months.

Southwest Contemporary has not been spared from the impacts of the pandemic, and this publication will be our last in print while we shift our focus to digital publishing and reconfigure our business model for the remainder of 2020 (with plans to bring back our print magazine in 2021). To keep up with our weekly content, resources, and future publications, please visit us at southwestcontemporary.com, sign up for our newsletters, and follow us on social media. We look forward to connecting with you!

Best wishes,



Lauren Tresp

editor + publisher, Southwest Contemporary
lauren@southwestcontemporary.com

Image: Alberto Cruz



HECHO A MANO

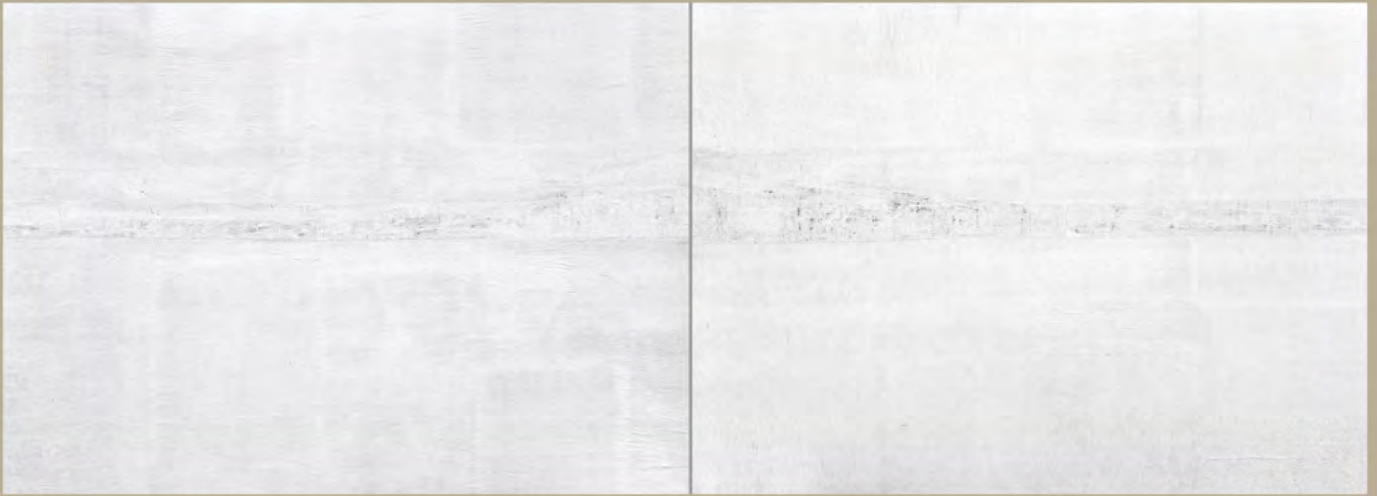
830 Canyon Road ~ Santa Fe
hechoamano.org



GEBERTCONTEMPORARY.com
505.992.1100

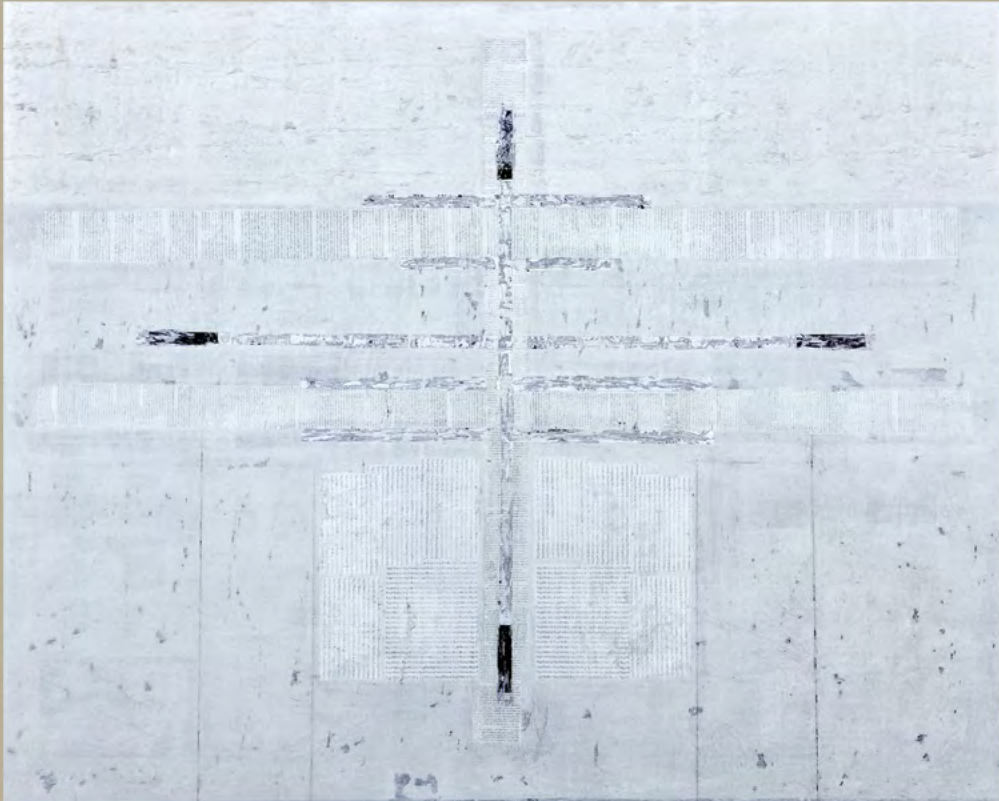
CHIAROSCUROSANTAFE.COM
505-992-0711

558 CANYON RD, SANTA FE, NEW MEXICO 87501



Laws of Mercy, Mixed Media on Canvas, 36 X 96, 2020

TIMOTHY LEROY MEEHAN



Heroine of the North, Mixed Media on Canvas, 48 X 60, 2020



SUMMER 2020
INTRODUCING WORLD-CLASS EUROPEAN JEWELRY

INFINITE BEAUTY
ULLA & MARTIN KAUFMANN
+
CELEBRATING 20 YEARS
PETER SCHMID - ATELIER ZOBEL

Explore in the gallery & online



PATINA =
BEAUTY OVER TIME.

IMAGE: ALLISON BARNETT. PHOTO: BYRON FLESHER. NECKLACE: ULLA & MARTIN KAUFMANN

131 West Palace
Santa Fe, NM 87501
+1 505.986.3432

PATINA-GALLERY.COM



PATINA GALLERY

Celebrating 2 Decades of
SOUL STIRRING WORKS®

Frederick Hammersley Artist Residency at Tamarind Institute

ELLEN LESPERANCE

Support provided by
Frederick Hammersley Fund for the Arts
at the Albuquerque Community Foundation



An Online Conversation: Ellen Lesperance and Julia Bryan-Wilson

Thursday, October 29, 4 pm MT; details at tamarind.unm.edu

 Tamarind
INSTITUTE

505.277.3901 | tamarind@unm.edu



MAESTRO

FINANCIAL PARTNERS

Like the sections of an orchestra, we bring together the sections of your financial picture and life's goals to create a harmonic symphony... listening for ways to fine tune things along the way, like any great maestro.

We invite you to contact us if you believe we could be of service in financial planning or investment management.

Speaking of service, we passionately support the Santa Fe community and the arts. Maestro Financial Partners is a proud sponsor, board member, member and/or donor of:



Southwest
Contemporary



Shawn Waked, M.S., CERTIFIED FINANCIAL PLANNER™

222 Otero Street, Santa Fe, NM 87501 • MaestroFP.com • 505-278-7100

Securities offered through Raymond James Financial Services, Inc., member FINRA/SIPC. Investment advisory services are offered through Raymond James Financial Services Advisors, Inc. Maestro Financial Partners is not a registered broker/dealer and is independent of Raymond James Financial Services, Inc. Raymond James Financial Services is not affiliated with any of the above mentioned organizations.



Feminisms

An exhibition & series of public programs

September 26, 2020 – January 2, 2021

516
ARTS

At 516 ARTS, 516 Central Avenue SW
Downtown Albuquerque, New Mexico
516arts.org

Presented in partnership with:



Wheelwright Museum
OF THE AMERICAN INDIAN



An initiative presented in
association with the
Feminist Art Coalition (FAC)

Curated by **Andrea R. Hanley** (Navajo)

Natalie Ball (Modoc/Klamath/Black)

Dorielle Caimi

Desert ArtLAB April Bojorquez (Rarámuri) & Matt Garcia (Chicano)
& **Shawna Shandiin Sunrise** (Diné/Kewa)

Angela Ellsworth

Haley Greenfeather English (Ojibwe)

Elisa Harkins (Muscogee Creek/Cherokee)

Mara Lonner

Luzene Hill (Eastern Band Cherokee)

Carrie Marrill

Thais Mather

Rosemary Meza-DesPlas (Latina)

Eddie Tsong (Taiwanese American)

Marie Watt (Seneca Nation)

Image: Marie Watt
Untitled (Dream Catcher), detail

VIRTUAL UNTIL FURTHER NOTICE:

New Mexico arts organizations bring us together in the era of social distancing

by Maggie Grimason

I hover over the highlighted text on the City’s website for the Albuquerque Museum of Art: *Click to enter the exhibition*. I pause, click, and then see the familiar atrium of the museum focused on the doors of the special exhibitions gallery—rendered digitally as blocky and illustrative, accurately suggesting that here you are, but not exactly. The doors don’t open; instead, the camera passes straight through them and gives me a zoomed-out view of *Trinity: Reflections on the Bomb*.

While the show was curated by Joseph Traugott well before COVID-19 reached the life-changing breadth it has today, the promotional images of Naomi Bebo’s *Beaded Mask*—an Iraqi gas mask embellished with beads and deer hide, trimmed with ribbon and ermine—create a slant analogy with public life today. This is the only way that the work in the exhibition can currently be viewed, a safety measure put in place to allow for social distancing without sacrificing access to culture.

Fully digital exhibitions are just one means that institutions have developed in response to ongoing closures. “When Southwestern Association for Indian Arts made the difficult decision to cancel the 99th Indian Market because of COVID, we knew that it wasn’t an option to ‘sit it out’ for a year,” explained the organization’s PR and marketing director, Amanda Crocker. That sentiment seems to be echoed throughout the state as major institutions and events pivot toward

a model that will allow them to persist in the face of uncertainty.

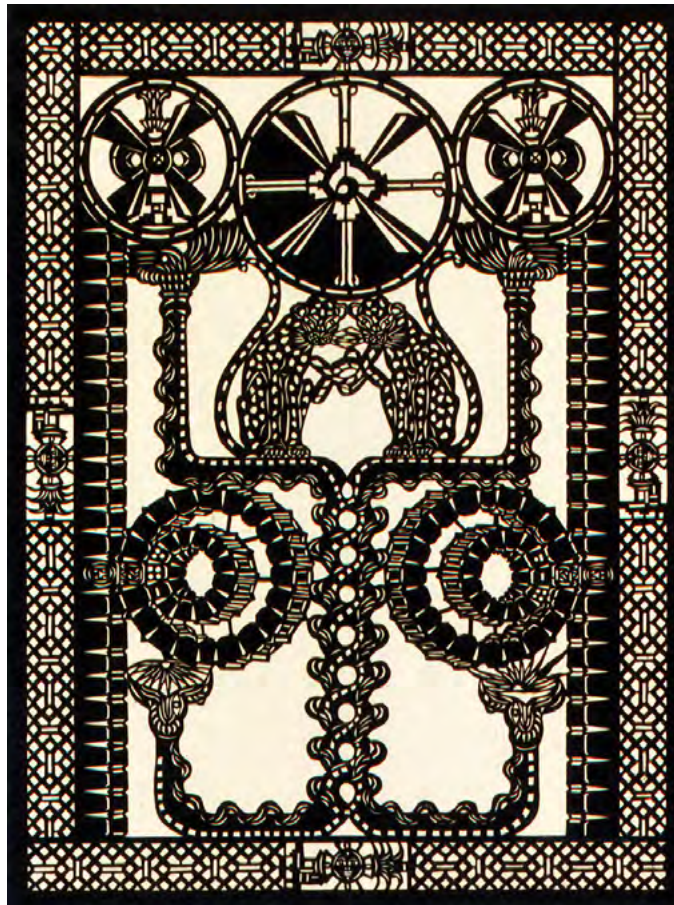
For example, 516 Arts in downtown Albuquerque launched its *Museum from Home: Resilience* project in mid-March

digital space are the likes of Mexico City artist Catalina Delgado-Trunk’s *Cyclical Time*, an intricately cut work in paper that uses 2012’s Mayan calendar predictions as a jumping-off point for a powerful meditation on time. In a moment when, as Kierkegaard (for me, via Parul Sehgal’s “In Search of Time Lost and Newly Found” in the *New York Times*) noted, “time itself is the task,” Delgado-Trunk’s exploration of the calendar, endings, and ongoingness takes on a profundity hard to imagine it would’ve had even on December 21, 2012.

Relevance is another element of the shift in institutional and organizational arts and cultural offerings this summer. The necessity of migrating exhibitions, thesis shows, lectures, fairs, and other events to online platforms may ultimately confer greater legitimacy to works exhibited and sold online, which may then lead to greater accessibility to more markets for artists and patrons alike. Even creatives who are simply seeking an audience will find more opportunities.

“Our mission has ultimately become more expansive,” Stuart Ashman, CEO of the International Folk Art

Market in Santa Fe, said. The market—a summertime staple drawing in thousands of artists and visitors from around the globe—has moved its entire programming online this year. It’s a space the staff and board of directors had long wanted to make use of and are now committed to seeing become comprehensive, serving a larger population sheerly by way of the openness of the platform. With all workshops, lectures, panels, and presentations online and offered free



Catalina Delgado-Trunk, *Cyclical Time*, 2012, cut paper over paper, 40 x 30 in.

to create a sense of global connectivity despite the necessity of isolation. In it, artists from any location submit a single artwork for digital display across the nonprofit art space’s channels. The curators specifically requested works that speak to their habits to stay inspired. In their online gallery and square-by-square via Instagram scroll are works that both respond directly to the pandemic and those that are suggestive of the experience of wading through it. Within the



Santa Fe Indian Market, one of many landmark annual events forced to adapt to a virtual-only format due to the COVID-19 pandemic. Photo courtesy SWAIA.

As artists rise to the occasion, creating the work that will reflect this unique time back to us and to future generations, institutions too are tasked with creating channels for our culture bearers to access more resources and have their necessary voices amplified.

of charge, attendance still won't likely reach the critical mass of the "real deal," though it's likely that the market will draw in a new audience. "That's a silver lining," Ashman said.

Crocker pointed to a similar expansion of Indian Market's core mission. "We saw this as a time to not just simply incorporate some e-commerce, but to truly expand the way Native artists reach broader and more diverse audiences," she explained, elaborating on more integrative programs for artists on marketing and business, as well as 31 days of educational programming for the broader community in this year's digital iteration of the market.

Indeed there are many silver linings to greater equity and access to culture, education, and art, but it's hard to put your finger on what exactly is lost in a virtual environment without resorting to cliché. As I scrolled through the galleries of the Albuquerque Museum's exhibition while sitting at the kitchen table in my pajamas, I felt the experience was muted. More akin to a morning scroll through

Instagram than a visit to the museum. I find that when I read or write about art that I'm tuned in to the atmosphere—the quality of light, the noises, the hush of other patrons in the gallery, who was there, what conversations we had. Those social qualities are often what emphasize an exhibition's meaning and what makes them prone to the unexpected—to the flashes of magic that make a piece, exhibition, or event unforgettable.

"The celebration aspect of being together, we've lost," Ashman explained. "That spiritual connection. None of that will happen." While this period of tragedy and unrest on a global scale may rob us of those opportunities to gather in the established ways, the lull too can be charged with meaning. "In this country, as we struggle to shift our values to become more inclusive, the work of artists as culture bearers is something we can't ignore," Crocker noted. "In fact, it is something to look towards for inspiration and validation."

As institutions meet history head-on, this departure from business-as-usual

offers a meaningful pause. An opportunity to rethink practices, build out programming (online and, in the future, off), and center equity in every branch of operations. As artists rise to the occasion, creating the work that will reflect this unique time back to us and to future generations, institutions too are tasked with creating channels for our culture bearers to access more resources and have their necessary voices amplified. "We're not doing a market," as Ashman summarized, "but we haven't forgotten about the community." With such a sense of accountability and purpose at heart, support for the arts across New Mexico ensures the ongoingness of its reach and vitality.

Maggie Grimason is a writer and editor living in Albuquerque, NM. She edited a collection of essays on public art, *Visually Speaking*, was previously the Arts & Lit editor of the *Weekly Alibi*, and contributes to many other independent publications. When she's not writing, she's walking the bosque, planning her next trip, or writing poetry in bed.

2020 ANNIVERSARIES

by Angie Rizzo



National Hispanic Cultural Center campus. Courtesy NHCC.

20th National Hispanic Cultural Center, Albuquerque

The National Hispanic Cultural Center, founded in 2000, is host to an impressive 20-acre campus that borders the Rio Grande Bosque in the South Valley of Albuquerque. This relatively new organization offers over 700 events a year, including music, performance, literary, visual arts, cuisine, and more. The NHCC serves thousands every year through educational programming, including all fourth graders in the Albuquerque Metro area who visit on field trips to learn about Hispanic culture and the ecology of the area. Edward Lujan, one of the founders and an Honorary Board Emeritus described it to me as the “Four-legged stool. Each leg represents one of the four tenets of culture; language, food, art, and history.” The NHCC has them all, in what has to be one of the most comprehensive cultural centers in the state of New Mexico.

The NHCC began with an initiative in the 1980s to help educate school children about Hispanic culture and curb racism. The programs were successful and grew exponentially, with the original vision to share Hispanic culture expanded to reach the broader populations and demographics of New Mexico. “If you want to promote understanding, you invite someone in to get to know you,” says Executive Director Josefa González Mariscal on the relevance of the NHCC in this particular moment of social

and racial justice movements. Both González Mariscal and Lujan acknowledge the importance of cross-cultural dialogue in their organizational mission and that cultural gaps might be bridged through the two-way act of sharing.

Further, the new director aims to build on the regional

successes of the NHCC and bring awareness of its offerings to the national stage. González Mariscal, who began work at NHCC only six weeks ago at the onset of the pandemic, says, “Everyone I speak to calls the NHCC Albuquerque’s best-kept secret. Great things shouldn’t be secret, and I intend to share the great things we are doing here on a national level.”

30th Santa Fe Workshops, Santa Fe

The Santa Fe Workshops was founded in 1990 by Reid Callanan as a western outpost for photography education. The residential program hosts students from around the world for seasonal sessions at their picturesque campus located near



Santa Fe Workshops participant. Photo: Ryan Heffernan.

Museum Hill. In addition to their Santa Fe-based classes, they also host courses in San Miguel de Allende, Mexico, and Havana, Cuba. 2020 has brought great change to the residential and travel-based programs of the Workshops and

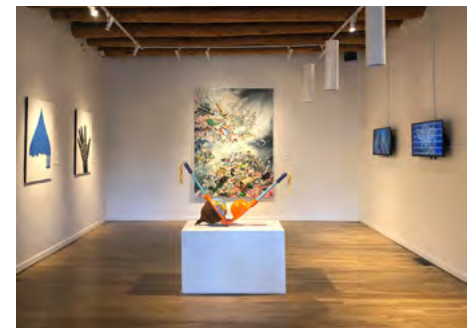
they have quickly adapted some of their workshops to an online platform.

Callanan taught the first class in April to see if it could be a viable option. “It works. I had to try it out for myself first, and so now I can say with assurance that our online photography programs have a lot to offer,” says Callanan. Though it is not a replacement for in-person classes, distance-learning has its benefits, mainly accessibility. Those who may not have been able to travel to Santa Fe are now able to engage with high-level photography instructors through this online platform.

The Santa Fe Workshops has seen remarkable shifts at the beginning of each decade for the last thirty years. In 2000, the transition from film to digital photography rocked the industry and the Workshops was quick to embrace the new technology. In 2009-2010 the Great Recession and political turmoil in Mexico forced the Workshops to put a pause on their San Miguel de Allende program, which provided the opportunity to begin a new travel program in Cuba. Through all these obstacles the Workshops has embraced the opportunity to change and adapt, a quality that has surely contributed to their longevity and significance in the photography industry.

30th Turner Carroll Gallery, Santa Fe

Turner Carroll Gallery has been a mainstay of the Canyon Road arts district since 1991 when Michael Turner and Tonya Turner Carroll signed the lease



Turner Carroll Gallery. Photo: Shastyn Blomquist.

on 725 Canyon Road. Two weeks later, they were married. The couple built the gallery from the floor up (figuratively and literally); they sanded the floors and walls and began the journey of establishing themselves as contemporary art gal-

lerists. “By the end of our second week open, we had only \$50. We decided that we would rather be a short-lived gallery that showed the work we loved than to show the work we knew would sell,” said Tonya Turner Carroll. Needless to say, good luck came to them with a few art purchases at the last minute, but since that moment of nearly closing, they vowed to each other that they would only show the work they loved.

Many of the artworks they show and personally collect are made by women, including Judy Chicago and Hung Liu. Tonya and Michael are deeply engaged with both artists, and this year they have several collaborations in the works with Chicago including the formation of a Judy Chicago Museum and for Liu, working with two major museum shows. Turner Carroll remarked, “We are dedicated to showing women artists and supporting their careers. It’s amazing to witness these artists get the recognition they deserve and to help them in that journey.”

When I asked Tonya what her vision for the next 30 years is for Turner Carroll, she replied, “I will be sitting in the same seat, in the same building, and will be working in exactly the same capacity as I am now. We have no plans to move, we love Santa Fe, it is our home.”

35th Santa Fe Art Institute, Santa Fe

Founded in 1985, the Santa Fe Institute of Arts has attracted established contemporary artists such as Richard Diebenkorn and John Baldessari and provided emerging artists with an opportunity to work with internationally recognized artists. Like many long-running arts programs, each era is a reflection of its time. SFAI has shifted towards addressing social justice issues for the last twenty years and specifically anti-racism more recently. Their thematic residencies welcome local, national, and international artists in all stages of their careers to apply for one- to three-month residencies at their Midtown Santa Fe campus location. In addition to working on their proposed projects, the artists engage with the community in public programs such as open studios and SFAI 140, lighting-round style presentations.

Executive Director Jamie Blosser

shared that 2020 was intended to be a year of extended public programming, including two international alumni trips which had to be canceled with short notice because of the pandemic. SFAI is adapting and responding to the crisis and current events with a podcast and other virtual programming that aims to continue discourse around social justice and will feature SFAI residents and alumni. “We like that the name implies looking at things from new angles and new perspec-



Santa Fe Art Institute campus. Courtesy SFAI.

tives,” explains Blosser. SFAI’s podcast *Tilt* launches at the end of July 2020.

SFAI helped to launch the Midtown Arts Alliance and has been advocating for art and culture to be a critical aspect of the upcoming Midtown development that will take place at the former Santa Fe College of Art and Design campus. “The idea of connectivity is what we are really focusing on,” Blosser says about the project. She aims for the development to physically and figuratively connect the surrounding neighborhood: “We want to celebrate these adjacent neighborhoods and make sure that the residents’ memories, stories, and hopes are a part of the Midtown project.” Her goal is to help make the Midtown development a gathering place for diverse communities in the heart of the city while reflecting Santa Fe’s and northern New Mexico’s Indigenous, Latinx, Hispanic, and Chicanx communities and cultures.

40th photo-eye, Santa Fe

Photo-eye was born out of Rixon Reed’s home in Austin, Texas, as a photobook mail-order business in 1979. He spent five years in the 1970s in New York City working at one of the first commercially successful photography galleries, Witkin

Gallery, and realized that he could have a place in the niche market of photobooks. Having amassed a mailing list from his photobook business, Reed was able to smoothly expand into exhibiting and selling fine-art photography when he moved the business to Santa Fe in 1991 and opened the original Garcia Street location. Photo-eye now operates out of two locations in Santa Fe: a gallery in the Railyard district and a bookstore near Meow Wolf in Midtown (Rufina Circle).



Photo-eye Gallery. Courtesy the gallery.

Today, a large percentage of photo-eye’s business is done online despite their physical expansion, thanks in large part to the company’s catalogue legacy and partly because Reed built one of the first book e-commerce websites in 1995. Around the same time, Amazon was just coming on the scene and would become one of photo-eye’s biggest competitors. “Diversification has been our savior and continues to be. We had to figure out how to offer something that no one else could provide—a curated selection of signed photobooks from around the world which had more value than the discounts being offered at the large, online retailers,” Reed says. Coincidentally, that online business has not only been a lifeline during the pandemic but has allowed the photo-eye Gallery to flourish as one of the premier fine-art photography destinations. Reed continues to diversify his business while keeping his eye on virtual offerings. Later in 2020, photo-eye will roll out a new service specifically for building artists’ and photographers’ websites called VisualServer X, which aims to be the Squarespace or Wix for artists.

Angie Rizzo is a freelance curator, writer, and arts administrator based in Santa Fe, NM.

PRESCOTT

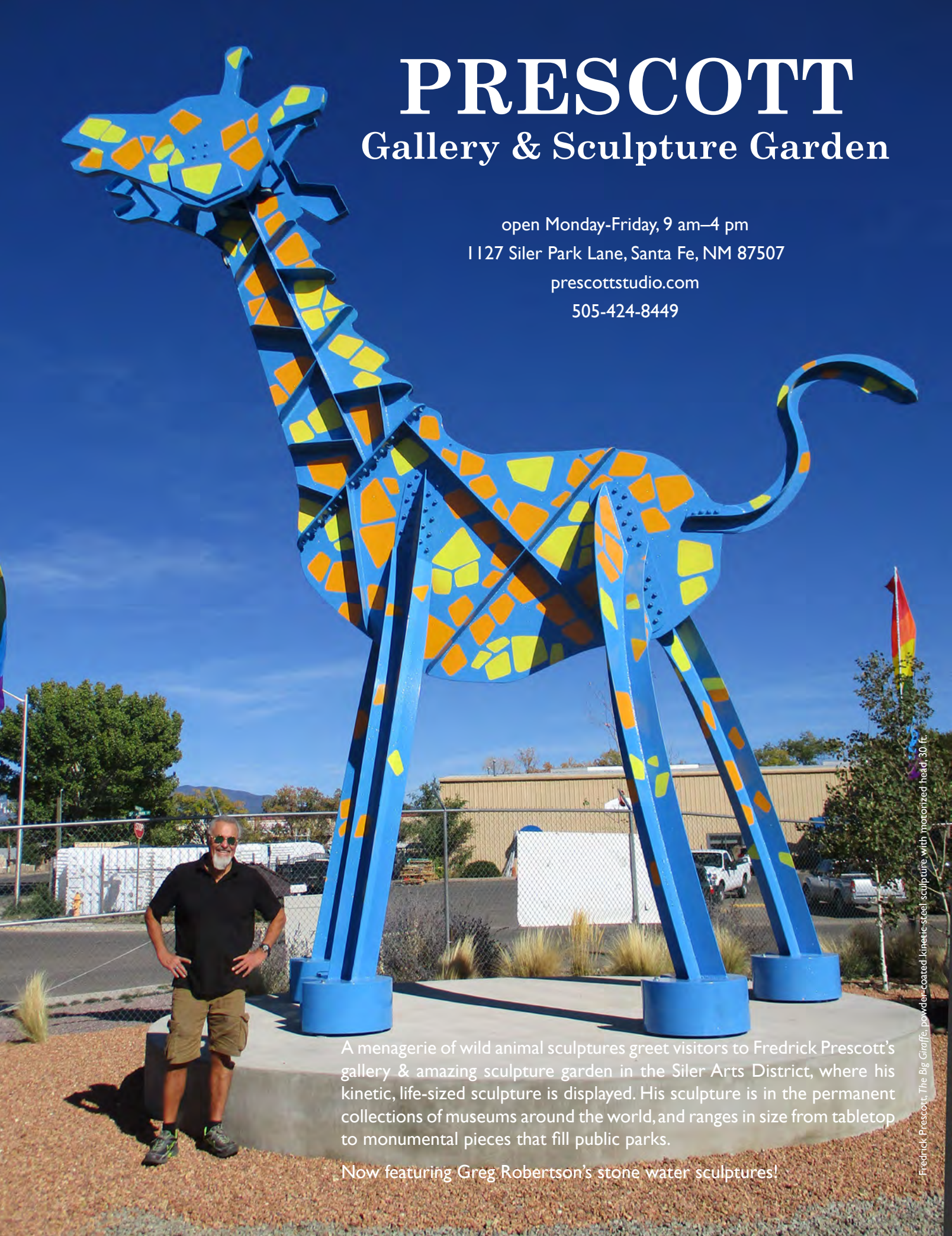
Gallery & Sculpture Garden

open Monday-Friday, 9 am–4 pm

1127 Siler Park Lane, Santa Fe, NM 87507

prescottstudio.com

505-424-8449



A menagerie of wild animal sculptures greet visitors to Fredrick Prescott's gallery & amazing sculpture garden in the Siler Arts District, where his kinetic, life-sized sculpture is displayed. His sculpture is in the permanent collections of museums around the world, and ranges in size from tabletop to monumental pieces that fill public parks.

Now featuring Greg Robertson's stone water sculptures!

INFINITE BEAUTY: Ulla and Martin Kaufmann Strive for Innovation and Essence

Patina Gallery presents *Infinite Beauty, On the Move*, a collection by master metalsmiths and jewelry makers Ulla and Martin Kaufmann, in partnership with Charon Kransen Arts. Pioneers in their craft, the Kaufmanns are considered some of the most important artists working in gold and silver. The married couple has collaborated closely for fifty years, based at their atelier in Hildesheim, Germany, and traveling frequently to share and gather inspiration. Together, they have mastered gold and silversmith techniques and forged new forms. Their process is one of organic development, driven by a deep knowledge of classical methods and their contemporary vision of elegance and innovation. "We derive forms from our own lives," they say, "from our joys and from our sorrows." Jewelry that springs from such sources becomes a special punctuation in the collector's narrative, commemorating complex moments. The online exhibition opened July 17, 2020, at patina-gallery.com.

Infinite Beauty, On the Move

July 17-August 17, 2020

Patina Gallery, Santa Fe

by Tamara Johnson



CREATIVE PARTNERS

The Kaufmanns have found harmony in their creative partnership that manifests in their work. Ulla is more methodical, approaching concepts slowly as she gathers possibilities and considerations. Martin is more reflexive, pouncing swiftly on ideas as he responds to creative stimuli. The artists' early stylistic impetus was rooted in post-war, Bauhaus aesthetics. They decided on a radical turning point in the 1980s when they participated in their first arts and crafts fair with an industrial inclination. From then on, they became the inventors of their own style. Their process is a kind of dialectic, moving between minds and hands until balance is achieved and expressed. This flow allows them to find the fulcrum point between contradictions: tradition and innovation, thinking and making, austerity and beauty, movement and metal.

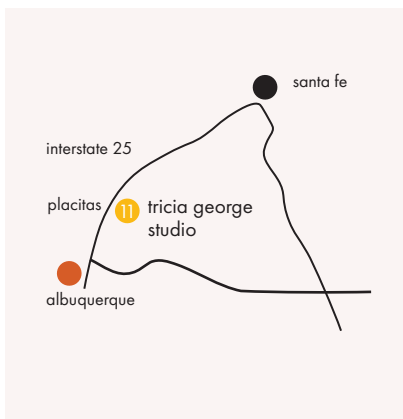
EXPERTISE AND CRAFT

Decades of gathered knowledge allow the Kaufmanns to work daringly with their materials. Especially expert at wielding high-karat gold, the artists hammer dynamic tensions into their bands. This technique contributes to almost life-like dynamism in their jewelry. Their pieces wrap around the body gracefully. The subtly flexible bands that form the conceptual foundation of their work can pull and give, responding and adapting to the wearer without compromising or breaking. Few goldsmiths are able to infuse their work with such fluidity. The artists are committed to ensuring their craft passes on, generously supporting initiatives to promote young artists.

AESTHETIC CONCEPTS

The Kaufmanns' work makes strong statements about courage, creativity, and honesty. Sculptural and functional, their jewelry (spanning rings, bracelets, necklaces, and earrings) is meant to be built upon and reinvented over time. Minimalist design, always beginning from the band, allows for growth and evolution. Gemstones sometimes punctuate their work, often with playful asymmetry and color that create lightness. Other pieces allow the purity of the material and form to stand for itself. The aesthetics of space become tangible—and comfortable—through their architectural sensibilities and understanding of the relation between the wearer and the piece. The simplicity of the Kaufmanns' designs renders each decision elemental, with no cover for falsity, stripping away all but the essential.

ALBUQUERQUE



Legend

C CREATIVE PROFESSIONALS	D DESIGN	F FOOD + DRINK	P PERFORMING ARTS
O ART ORGANIZATIONS	G GALLERIES	M MUSEUMS	S ART SERVICES



1 516 Arts

516 Arts is an independent, non-collecting contemporary art museum that celebrates thought-provoking art in the here and now, featuring local, national, and international artists.

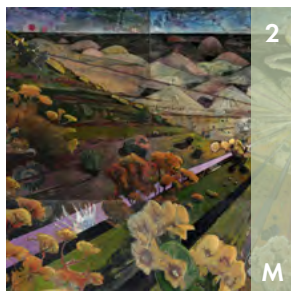
tue-sat 12-5 pm
516 Central Ave SW, Albuquerque
505-242-1445
516arts.org



7 Richard Levy Gallery

The Richard Levy Gallery program comprises contemporary art in all media by emerging and established regional, national, and international artists.

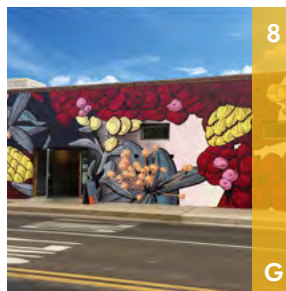
by appointment
514 Central Ave SW, Albuquerque
505-766-9888
levygallery.com



2 Albuquerque Museum

Art. History. People. Albuquerque Museum is all things New Mexico: from the Alvarado to O'Keeffe, Blumenschein to the Bosque, and more.

tue-sun 9 am-5 pm
2000 Mountain Rd NW, Albuquerque
505-243-7255
cabq.gov/museum



8 Sanitary Tortilla Factory

Sanitary Tortilla Factory is a contemporary platform for artists and the community.

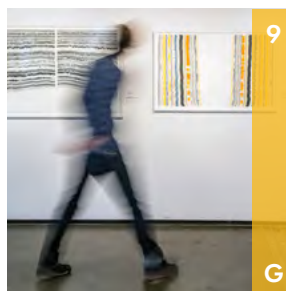
thu-fri 12-5 pm / by appointment
401 2nd St SW, Albuquerque
505-228-3749
sanitarytortillafactory.org



3 birds + Richard

A contemporary art gallery that strives to bring conceptual, installation, and new-media art to both the seasoned collector and those with a new curiosity.

by appointment
611 Loma Linda Pl SE, Albuquerque
505-321-2819
birds-richard.xyz



9 Tamarind Institute

Fine-art lithography workshop and gallery, offering prints by celebrated local and international contemporary artists ranging from Fritz Scholder to Judy Chicago and Jim Dine.

by appointment
2500 Central Ave SE, Albuquerque
505-277-3901
tamarind.unm.edu



4 Gallery Hózhó

Gallery Hózhó at Hotel Chaco is a fine art gallery dedicated to artists associated with New Mexico, including Indigenous, Latinx, and other communities.

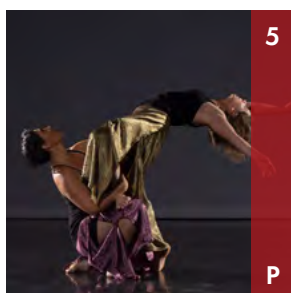
call for current hours/ by appointment
2000 Bellamah Ave NW, Albuquerque
505-306-2977
galleryhozho.com



10 Timothy Meehan Studio

Working towards a personal interior peace, creating an expression that emerges in approximate symmetry, executed, obliterated, and excavated.

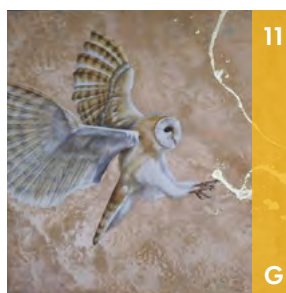
by appointment
1927 La Veta Dr NE, Albuquerque
505-266-0704
thisistheticket.org



5 Keshet Dance&Center for the Arts

Since 1996, Keshet is an arts non-profit that exists to inspire and unite community by fostering unlimited possibilities through dance, mentorship, and a creative space for the arts.

4121 Cutler Ave NE, Albuquerque
505-224-9808
keshetarts.org



11 Tricia George Studio

Tricia George has been working in the art industry for over 30 years. She has a strong understanding of acrylics and mixed media.

by appointment
5 Caballo Sendero, Placitas
415-577-5595
triciageorge.com



6 Palette Contemporary Art

Palette presents contemporary artwork and mid-century modern objects. Paintings (Eyvind Earle), prints (Calder, Thiebaud), glass, jewelry, restored radios, and watches are specialties!

mon-sat 10 am-6 pm
7400 Montgomery Blvd NE, Albuquerque
505-855-7777
palettecontemporary.com

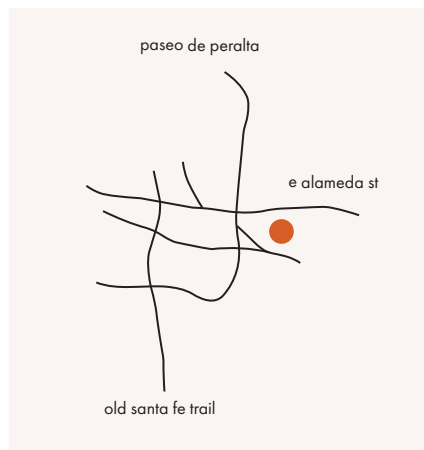


12 UNM Art Museum

The University of New Mexico Art Museum is a free, public museum located at the heart of UNM's Center for the Arts.

203 Cornell Dr NE, Albuquerque
505-277-4001
artmuseum.unm.edu

CANYON ROAD



Legend

C CREATIVE PROFESSIONALS	D DESIGN	F FOOD + DRINK	P PERFORMING ARTS
O ART ORGANIZATIONS	G GALLERIES	M MUSEUMS	S ART SERVICES



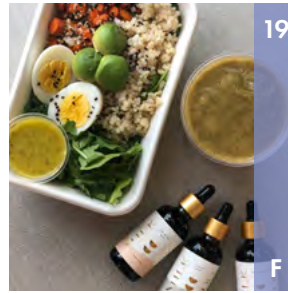
13

Art House

Art House is the only digital art collection free to the public in the Southwest. Featuring interactive and virtual artworks from the Thoma Art Foundation.

by appointment
231 Delgado St, Santa Fe
505-995-0231
arthouse.thomafoundation.org

G



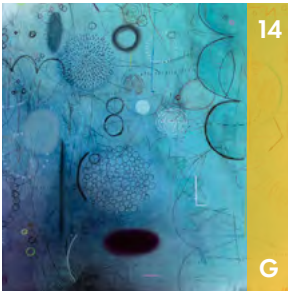
19

Manolla Cafe

Organic health food cafe—gluten-free and vegan options. Mama-friendly.

thu-tue 10 am-3 pm
223-B Canyon Rd, Santa Fe
505-365-2887
manollacafe.com

F



14

Chiaroscuro Contemporary Art

Specializing in contemporary abstraction and contemporary Native American sculpture, painting, and photography. Twenty artists represented with monthly solo and group exhibitions.

tue-sat 10 am-5 pm
558 Canyon Rd, Santa Fe
505-992-0711
chiaroscurosantafe.com

G



20

Nüart Gallery

Established in 2001, Nüart Gallery features abstract and figurative contemporary art by an international roster of mid-career and established artists.

daily 10 am-5 pm
670 Canyon Rd, Santa Fe
505-988-3888
nuartgallery.com

G



15

El Farol Restaurant

Hailed as Santa Fe's most historic and iconic bar and restaurant since 1835! Treat yourself to a truly authentic Santa Fe dining experience.

wed-sun 3-9 pm
808 Canyon Rd, Santa Fe
505-983-9912
elfarolsantafe.com

F



21

Owen Contemporary

Owen Contemporary is a premier fine-art gallery in Santa Fe known for featuring landscape and abstract paintings and sculpture.

daily 10 am-5 pm
225 Canyon Rd, Santa Fe
505-820-0807
owencontemporary.com

G



16

Gebert Contemporary

Working with midcareer and established local, national, and international artists who work in various media with a contemporary focus.

tue-sat 10 am-5 pm
558 Canyon Rd, Santa Fe
505-992-1100
gebertcontemporary.com

G



22

Tierra Mar Gallery

Tierra Mar is Santa Fe's newest contemporary art gallery located on Canyon Road. Representing mid- and late-career artists in a variety of creative media.

mon-sat 11 am-5 pm
225 Canyon Rd, Santa Fe
505-372-7087
tierramargallery.com

G



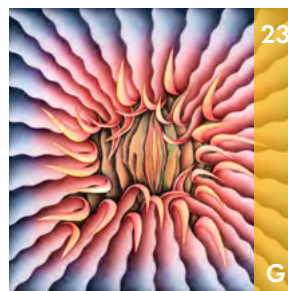
17

Hecho a Mano

Hecho a Mano supports artists making work at the intersection of innovation and tradition.

wed-sun 10 am-5 pm
830 Canyon Rd, Santa Fe
505-916-1341
hechoamano.org

G



23

Turner Carroll Gallery

With 29 years of museum-collected artists, including Judy Chicago, Hung Liu, and Hunt Slonem, Turner Carroll prides itself on expertise in the history of art.

daily 10 am-6 pm
725 Canyon Rd, Santa Fe
505-986-9800
turnercarrollgallery.com

G



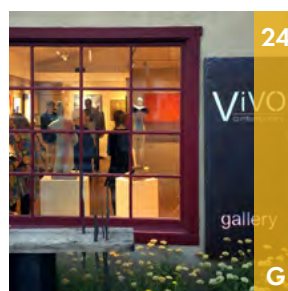
18

Kay Contemporary Art

Under the guidance of Karla Winterowd, both Kay Contemporary Art and Winterowd Fine Art are two of the best contemporary art galleries in the Southwest.

mon-sun 10 am-5 pm
600 Canyon Rd, Santa Fe
505-365-3992
kaycontemporaryart.com

G



24

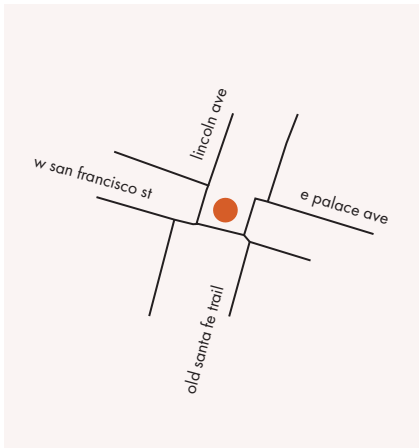
Vivo Contemporary

For 17 years, Vivo Contemporary has been showing the work of outstanding local artists in an elegant two-level gallery on historic Canyon Road.

daily 11 am-6 pm
725 Canyon Rd, Santa Fe
505-982-1320
vivocontemporary.com

G

DOWNTOWN



Legend

C CREATIVE PROFESSIONALS	D DESIGN	F FOOD + DRINK	P PERFORMING ARTS
O ART ORGANIZATIONS	G GALLERIES	M MUSEUMS	S ART SERVICES



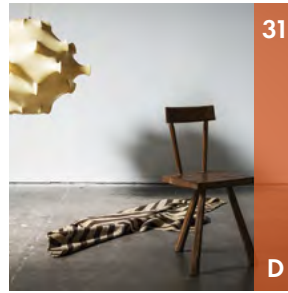
25

Brant Mackley Gallery

Offering exceptional antique American Indian and World Tribal Art, Native jewelry, and other fine art.

tue-sat 11 am-5 pm
1405 Paseo de Peralta, Santa Fe
505-670-2447
brantmackleygallery.com

G



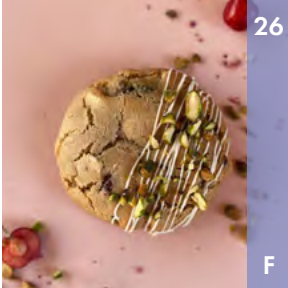
31

Hunt Modern

Hunt Modern gallery offers carefully curated home furnishings from all over the globe, with a focus on European design of the 20th Century.

tue-sat 11 am-4 pm by appointment
219 Galisteo St, Santa Fe
505-930-5321
huntmodern.com

D



26

Chainé Cookie Shop

Specialty cookie shop. Handmade cookies and french macarons. Open for online orders to pick up.

tue + thu 2-4 pm / sat 12-2 pm
131 W Water St, Santa Fe
570-4496
chainescookies.com

F



32

IAIA Museum

The IAIA Museum of Contemporary Native Arts is the country's only museum for exhibiting, collecting, and interpreting the most progressive work of contemporary Native artists.

call for current hours
108 Cathedral Pl, Santa Fe
505-424-2300
iaia.edu/mocna

M



27

Ellsworth Gallery

Ellsworth Gallery presents the best in Native contemporary arts, emerging artists, and museum quality Samurai artifacts from feudal Japan.

call for current hours
215 E Palace Ave, Santa Fe
505-989-7900
ellsworthgallery.com

G



33

James Compton Gallery

Selling historic Native American and New Mexican Spanish Colonial art specializing in early Navajo, Pueblo, and Rio Grande blankets, Southwest pottery, tools, and artifacts.

wed-sat 11 am-5 pm
28 Burro Alley, Santa Fe
505-699-0323
jamescomptongallery.com

G



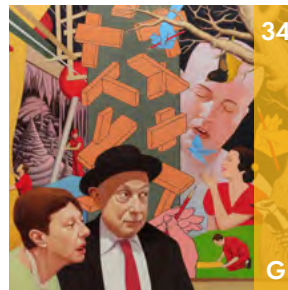
28

Fire & Hops

Upscale pub food in a casual setting. Eleven craft beer taps, select wines and artisanal ciders. Outdoor covered patio.

daily 5-9 pm
222 N Guadalupe St, Santa Fe
505-954-1635
fireandhopsastropub.com

F



34

Keep Contemporary

Showcasing cutting-edge new contemporary art.

wed-sat 11 am-5 pm / sun 12-5 pm
142 Lincoln Ave, Santa Fe
505-557-9574
keepcontemporary.com

G



29

Georgia O'Keeffe Museum

The O'Keeffe showcases the artist's art and life. Visit the website for current information and programming.

217 Johnson St, Santa Fe
505-946-1000
gokm.org

M



35

King Galleries

A gallery of contemporary and historic Pueblo pottery and contemporary Native paintings.

daily 10 am-5 pm
130 Lincoln Ave, Ste D, Santa Fe
480-440-3912
kinggalleries.com

G



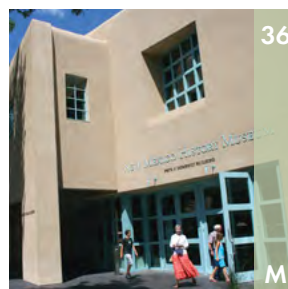
30

Heritage Inspirations

Our mission is to create an inspirational travel experience that elevates your senses and compels you to an unmatched, nearly spiritual encounter with Santa Fe.

wed-sun 9 am-5 pm
211 Old Santa Fe Tr, Santa Fe
505-999-5531
heritageinspirations.com

O



36

New Mexico History Museum

The NM History Museum includes stories that made the American West—from Native inhabitants to Spanish colonists, Santa Fe Trail riders, artists, scientists, and more.

daily 10 am-5 pm
113 Lincoln Ave, Santa Fe
505-476-5200
nmhistorymuseum.org

M



Summer Exhibitions

Indigenous Futurisms: Transcending Past/Present/Future
Through January 3, 2021

Tamara Ann Burgh & Luanne Redeye: FRAMED
Through January 24, 2021

Tom Jones: Unrelenting Spirits
Through March 28, 2021

Experimental exPRESSION: Printmaking @IAIA, 1963-1980
Through July 11, 2021

Virgil Ortiz (Cochiti), *Venutian Soldiers*, (detail), 2020,
Installation (dimensions variable), two mixed media outfits
(life size), video, collection of Virgil Ortiz,
photography by Kamden Storm



108 Cathedral Place Santa Fe NM 87501

iaia.edu/museum



classic • contemporary • original

**SANTA FE
PLAYHOUSE**

santafeplayhouse.org



37

New Mexico Museum of Art

The NM Museum of Art houses over 20,000 works of American and European art, including paintings, prints, drawings, sculpture, photographs, new media, and conceptual works.

sat-thu 10 am-5 pm / fri 10 am-7 pm
107 W Palace Ave, Santa Fe
505-476-5072
nmartmuseum.org

M



38

No Land

No Land is a downtown art space for solo and small group exhibitions and performances by early-career visual and performing artists, writers, and musicians.

sat 12-4 pm during exhibitions
541/2 E San Francisco Ave, #7, Santa Fe
216-973-3367
strangersartcollective.com

G



39

Obscura Gallery

Representing the finest contributions to the history of photography through both vintage and contemporary works.

tue-sat 11 am-5 pm / by appointment
1405 Paseo de Peralta, Santa Fe
505-577-6708
obscuragallery.net

G



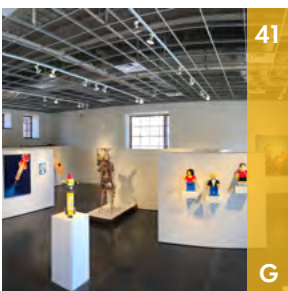
40

Patina Gallery

Patina Gallery exhibits handcrafted jewelry and fine art. Allison and Ivan Barnett founded Patina in 1999 with a mission to share soul-stirring works in Santa Fe.

mon-thu by appointment
131 W Palace Ave, Santa Fe
505-986-3432
patina-gallery.com

G



41

Santa Fe Community Gallery

The Community Gallery is a City-owned, City-operated gallery featuring the work of New Mexico artists exclusively.

mon-fri 10 am-5 pm
201 W Marcy St, Santa Fe
505-955-6707
santafenm.gov

G



42

Santa Fe Playhouse

Unafraid to provoke and challenge, the Santa Fe Playhouse creates and produces professional theater that entertains, inspires, and starts a conversation.

daily 11:30 am-3:30 pm
142 E De Vargas St, Santa Fe
505-988-4262
santafeplayhouse.org

P



43

Shiprock Santa Fe

Shiprock Santa Fe focuses on Native art of the American Southwest, offering Navajo weavings, pottery, fine art, vintage and contemporary jewelry, and mid-century modern furniture.

mon-fri 10 am-5 pm / sat 12-5 pm
53 Old Santa Fe Tr, 2nd Flr, Santa Fe
505-982-8478
shiprocksanatafe.com

G



44

Taos Auction Company

A full-service auction company offering estate liquidation services. Specializing in fine art, antiques, and Native and ethnographic art and artifacts.

tue-sat 11 am-5 pm
1405 Paseo de Peralta, Santa Fe
505-670-2447
taosauction.com

G



45

Tonic

An art deco drink lounge focusing on craft cocktails, local beers, organic wines, robust coffee, and live jazz.

mon-sat 5:30 pm-2 am
103 E Water St, Santa Fe
tonicsantafe.com

F



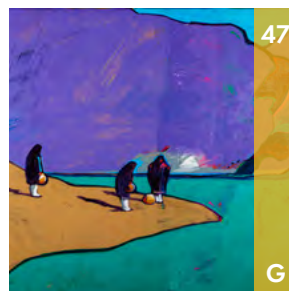
46

Ward Russell Photography

Ward Russell, noted Hollywood cinematographer and award-winning Santa Fe photographer, presents everchanging iconic images from his ongoing thirty-year career.

wed-sat 1-5 pm
102 W San Francisco St, #10, Santa Fe
505-231-1035
wardrussellphoto.com

G



47

Windsor Betts Art Brokerage

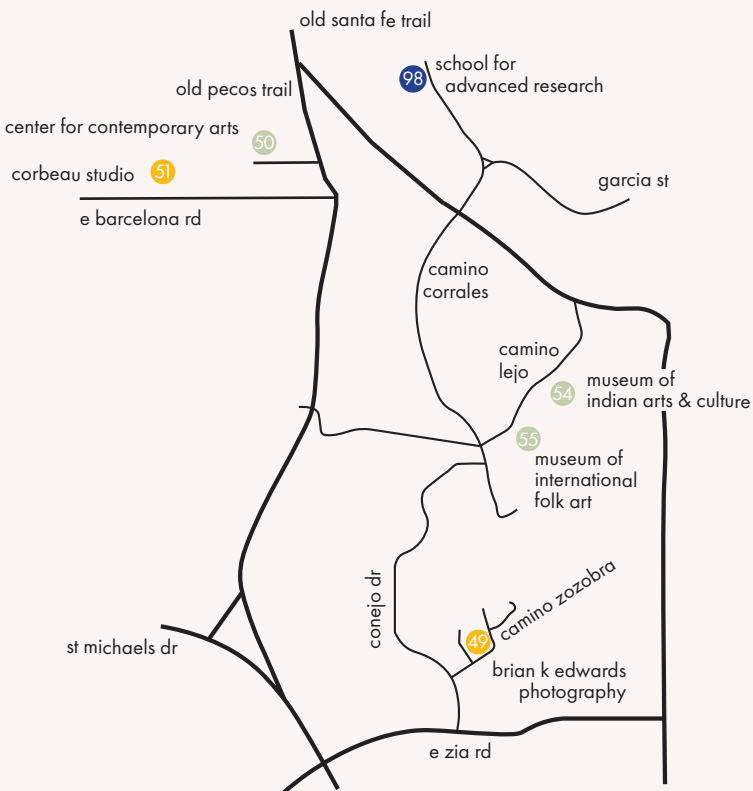
Whether you're in need of brokerage services or looking to purchase an exceptional piece of Southwest or Native American world-class art, give us a call.

thu-tue 11 am-6 pm /
wed by appointment
217 Galisteo St, Santa Fe
505-820-1234
windsorbetts.com

G

SANTA FE

MIDTOWN



MUSEUM HILL

Legend

C CREATIVE PROFESSIONALS	D DESIGN
O ART ORGANIZATIONS	G GALLERIES
P PERFORMING ARTS	F FOOD + DRINK
S ART SERVICES	M MUSEUMS

48

5. Gallery

Open Thursday through Saturday and by appointment.

thu-sat 12-5 pm
2351 Fox Rd, No 700, Santa Fe
505-257-8417
5pointgallery.com

G



54

Mus. of Indian Arts and Culture

The Museum of Indian Arts and Culture is a premier repository of Native art and material culture.

daily 10 am-5 pm
710 Camino Lejo, Santa Fe
505-476-1269
indianartsandculture.org

M



49

Brian K. Edwards Photography

Brian K. Edwards sells fine-art archival pigment, palladium, and silver gelatin photographic prints to the discriminating art collector and print connoisseur.

by appointment
814 Camino Zozobra, Santa Fe
505-603-9453
briankedwards.com

G



55

Mus. of International Folk Art

The Museum of International Folk Art houses the world's largest collection of international folk art.

daily 10 am-5 pm
706 Camino Lejo, Santa Fe
505-476-1200
moifa.org

M



50

Center for Contemporary Arts

CCA celebrates creativity across the arts, humanities, and sciences by generating transformative experiences, connecting people through innovative programming, exhibitions, and cinema.

1050 Old Pecos Tr, Santa Fe
505-982-1338
ccasantafe.org

M



56

Paula Roland Studio/Art Space

Paula Roland presents innovative contemporary encaustic paintings, prints, and mixed-media works to inspire art lovers, collectors, designers, and students.

by appointment
1570 Pacheco St, Bldg D-1, Santa Fe
505-577-6184
paularoland.com

G



51

Corbeau Studio

Co-create your inner portrait with multi-media artist and creativity guide, Laetitia Meffre. Custom payment plans available. View her work at laetitiameffre.com.

by appointment
200 E Barcelona Rd, Santa Fe
505-920-6751
corbeau.studio

G



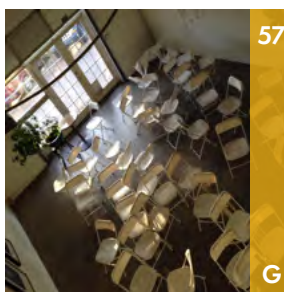
57

Phil Space

Phil Space holds the relationships with each other and our artwork as fundamental to the development of language, method, and meaning in our local culture.

mon-fri 10 am-5 pm by appointment
1410 Second St, Santa Fe
505-983-7945
philspacesantafe.com

G



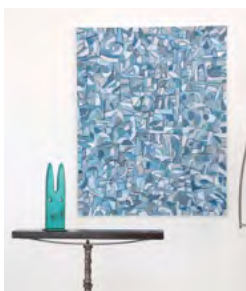
52

GVG Contemporary

We are an artist-owned gallery featuring painting, sculpture, jewelry, and fine-art furniture, previously located on Delgado Street at Canyon Road.

by appointment
Rufina Cir, Santa Fe
505-982-1494
gvgcontemporary.com

G



58

Prescott Gallery and Studio

Prescott Gallery, Sculpture Garden & Studio is located in the Siler Arts District, where Fredrick Prescott's marvelous kinetic, life-sized sculpture can be seen and touched!

mon-fri 10 am-4 pm
1127 Siler Park Ln, Santa Fe
505-424-8449
prescottstudio.com

G



53

Meow Wolf

Meow Wolf creates immersive experiences that transport audiences of all ages into fantastic realms of story and exploration.

wed-mon 10 am-8 pm
1352 Rufina Cir, Santa Fe
505-395-6369
meowwolf.com

O



59

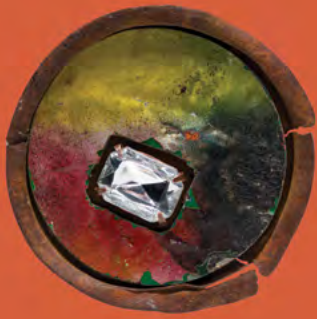
Teatro Paraguas

Teatro Paraguas is an intimate 55-seat black-box theater focusing on contemporary award-winning Latinx plays as well as poetry readings, flamenco concerts, music, and special events.

3205 Calle Marie, Santa Fe
505-424-1601
teatroparaguas.org

P





Robert Ebendorf
Kim Harrell
Angel Oloshove
Tanya Crane
Rachel Donner
Ford/Forlano
Gabo Martini & more

form & concept
435 S Guadalupe St, Santa Fe, NM
505.982.8111 | formandconcept.center

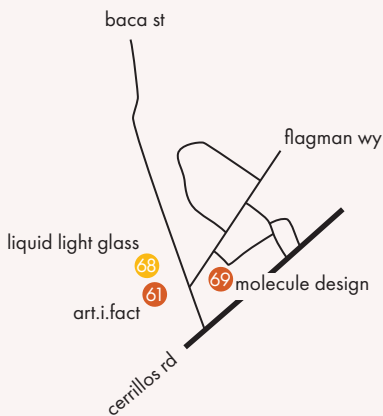




Nick Cave, *Head Dressed*, 2019

Zane Bennett Contemporary Art
435 S Guadalupe St, Santa Fe, NM
505.982.8111 | zanebennettgallery.com

RAILYARD



BACA RAILYARD

Legend

C CREATIVE PROFESSIONALS	D DESIGN	F FOOD + DRINK	P PERFORMING ARTS
O ART ORGANIZATIONS	G GALLERIES	M MUSEUMS	S ART SERVICES



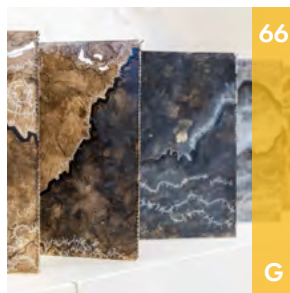
60

Ark Bookstore

Come explore our metaphysical wonderland in our spiritual bookstore and gem shop—all tucked away in our secret garden behind REI!

mon-sat 10 am-5 pm
133 Romero St, Santa Fe
505-988-3709
arkbooks.com

D



66

form & concept

At form & concept, we challenge the perceived distinctions between art, craft, and design through exhibitions of regional and international art, workshops, lectures, and artist residencies.

tue-sat 10am-5pm
435 S Guadalupe St, Santa Fe
505-780-8312
formandconcept.center

G



61

Art.i.fact

Art.i.fact is a consignment boutique featuring an eclectic and elegant mix of clothing, shoes, bags, and more.

mon-sat 10 am-5 pm
930 Baca St, Ste C, Santa Fe
505-982-5000
artifactsantafe.com

D



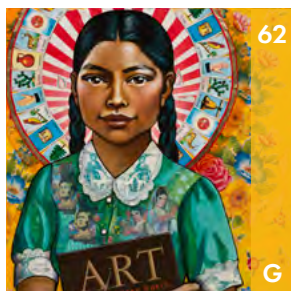
67

Joseph's Culinary Pub

Joseph's Culinary Pub is designed to be a platform for Chef Wrede's unique and uncompromising vision of traditional and contemporary cuisine, both regional and international.

daily 5-9 pm
428 Agua Fria St, Santa Fe
505-982-1292
josephsofsantafe.com

F



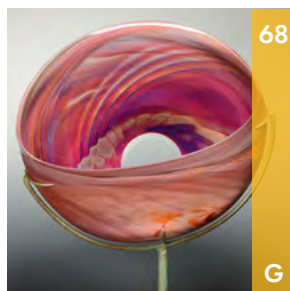
62

Blue Rain Gallery

Representing established, diverse contemporary artists working in a variety of media. With an eclectic approach, the gallery focuses on regional, Native American, and glass art.

mon-sat 10 am-5 pm
544 S Guadalupe St, Santa Fe
505-954-9902
blueraingallery.com

G



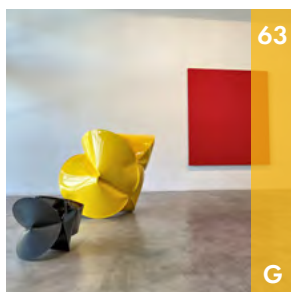
68

Liquid Light Glass

Contemporary glass-art gallery and studio featuring the work of Elodie Holmes and other local glass artists. Performing glass blowing demonstrations and limited classes daily.

mon-sat 10 am-5 pm
926 Baca St, Santa Fe
505-820-2222
liquidlightglass.com

G



63

Charlotte Jackson Fine Art

Charlotte Jackson Fine Art has a highly respected program that affords collectors the chance to see a wide variety of color-oriented painting and sculpture.

tue-sat 10 am-5 pm
554 S Guadalupe St, Santa Fe
505-989-8688
charlottejackson.com

G



69

Molecule Design

Molecule Design is the best Santa Fe resource for an extensive selection of innovative contemporary furnishings from well-known national and international brands.

mon-sat 10 am-5 pm
1226 Flagman Wy, Santa Fe
505-989-9806
molecule-design.com

D



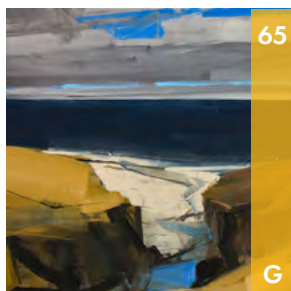
64

Encaustic Art Institute

Discover the art of wax. Featuring the largest collection of encaustic/wax medium in the country. Museum exhibitions as well as gallery work for sale.

tue-sun 12-5 pm
632 Agua Fria St, Santa Fe
505-424-6487
eainm.com

M



65

Evoke Contemporary

Compelling contemporary art of international acclaim.

tue-sat 10 am-5 pm
550 S Guadalupe St, Santa Fe
505-995-9902
evokecontemporary.com

G

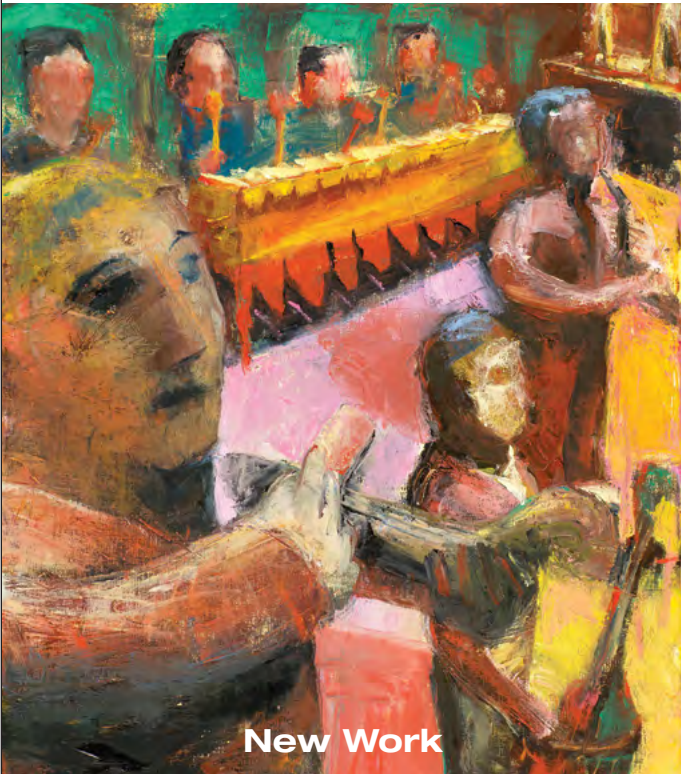
June 2021

the Field Guide 2021

Discover marketing and advertising solutions:

southwestcontemporary.com/advertise

CAROLTIPPITWOOLWORTH



New Work

www.caroltippitwoolworth.com

Richard
Levy
Gallery

always open online

visit by appointment

Albuquerque

levygallery.com • info@levygallery.com • [@levygallery](https://www.instagram.com/levygallery)

NEW RELEASE FROM SNAP EDITIONS

AN ESSENTIAL SOLITUDE

Walter De Maria's
The Lightning Field

Revisited

Kathleen Shields

snapeditions.com/books/shields/

snap



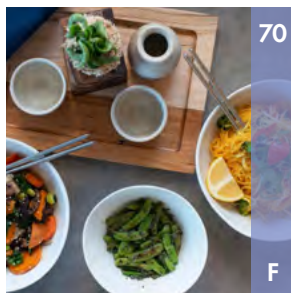
Lauren Tresp

arts strategy + consulting

Business and marketing
strategy and consulting
for artists, arts businesses,
and creative entrepreneurs

Schedule your free
discovery call:

505-424-7641
laurentresp.com



70

Opuntia Cafe

A tea house in a greenhouse; enjoy incredible food, coffee, and tea in our beautiful second floor cafe.

daily 8 am-10 pm
1607 Alcaldesa St, Ste 201, Santa Fe
505-780-5796
opuntia.cafe

F



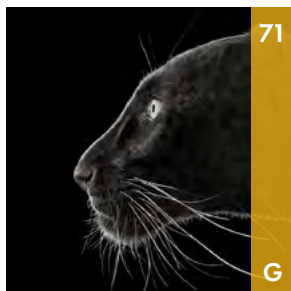
73

SITE Santa Fe

SITE Santa Fe nurtures innovation, discovery, and inspiration through the art of today.

thu 11 am-5 pm / fri 11 am-7 pm /
sat 10 am-5 pm / sun 12-4 pm
1606 Paseo de Peralta, Santa Fe
505-989-1199
sitesantafe.org

M



71

photo-eye Gallery

Santa Fe's premier contemporary photography gallery. Internationally acclaimed artists (Nick Brandt, Julie Blackmon, Maggie Taylor, Brad Wilson, and twenty-five more) in an elegant, architectural space.

mon-sat 10 am-5:30 pm
541 S Guadalupe St, Santa Fe
505-988-5152 x202
photoeye.com

G



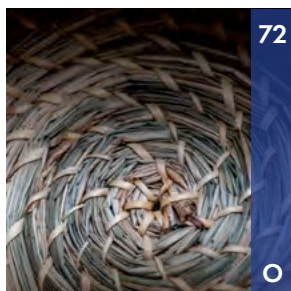
74

TAI Modern

TAI Modern exhibits and supports contemporary art in a variety of media, with a particular focus on Japanese bamboo and contemporary American art.

mon-sat 10 am-5 pm
1601 Paseo de Peralta, Santa Fe
505-984-1387
taimodern.com

G



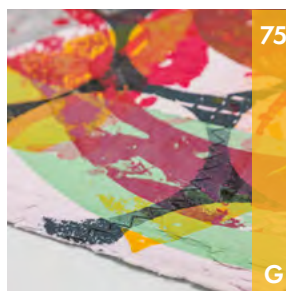
72

SFFM Railyard Artisan Market

Sunday showplace of New Mexico makers, artists, and creatives. The building is handicap-accessible with free parking on Sundays.

sun 10 am-3 pm
1607 Paseo de Peralta, Santa Fe
505-983-4098
santafefarmersmarket.com

O



75

Zane Bennett Contemporary Art

Founded in 2005, Zane Bennett Contemporary Art exhibits editioned artworks by modern and contemporary masters.

tue-sat 10 am-5 pm
435 S Guadalupe St, Santa Fe
505-982-8111
zanebennettgallery.com

G

**Museums will always matter.
Culture is everlasting.
Folk art connects the world.
History is our best teacher.**

Our Annual Fund Supports the Museum of New Mexico System

- Museum of Indian Arts and Culture
- Museum of International Folk Art
- New Mexico History Museum
- New Mexico Museum of Art
- New Mexico Historic Sites
- Office of Archaeological Studies

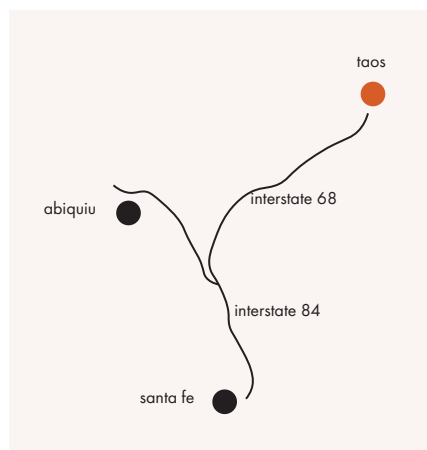
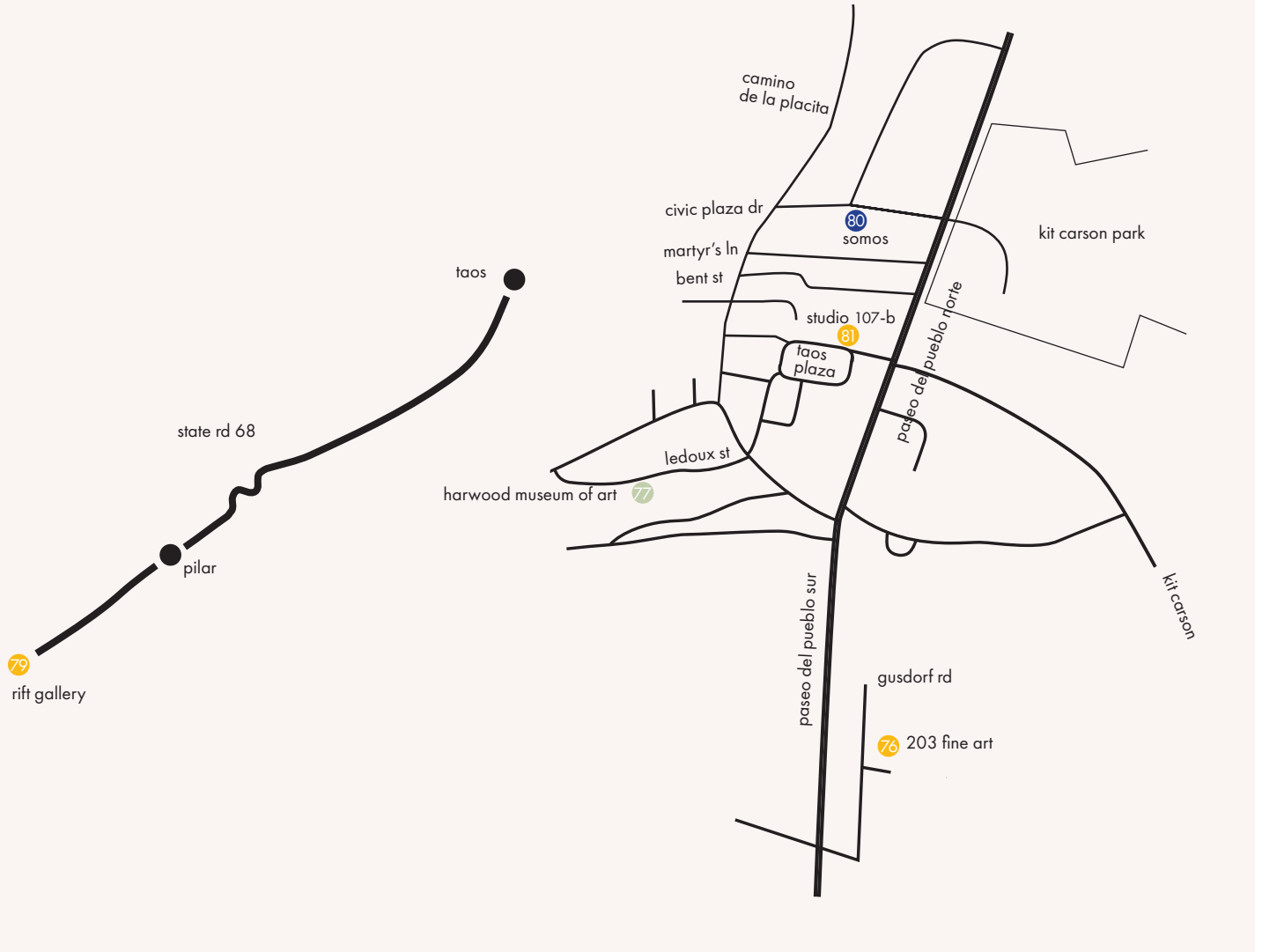
Help protect and preserve the art, culture and history of New Mexico and folk art traditions worldwide.

Please consider a gift to our Annual Fund.
museumfoundation.org/annual-fund
505.982.6366, ext. 100



MNMF
MUSEUM OF NEW MEXICO FOUNDATION

TAOS



Legend

C CREATIVE PROFESSIONALS	D DESIGN	F FOOD + DRINK	P PERFORMING ARTS
O ART ORGANIZATIONS	G GALLERIES	M MUSEUMS	S ART SERVICES



76

203 Fine Art

A Taos gallery specializing in early modern to contemporary art, with a special focus on Taos Moderns.

by appointment
1335 Gusdorf Rd, Ste i, Taos
575-751-1262
203fineart.com

G



79

Rift Gallery

Offering exceptional 2-dimensional and 3-dimensional contemporary art, as well as stone sculpture and stone carving classes.

call for current hours
2249 NM Highway 68, Rinconada
505-579-9179
riftgallery.com

G



77

Harwood Museum of Art

Home of the world-famous Agnes Martin Gallery and showcasing world-class art relevant to northern New Mexico on historic Ledoux Street since 1923.

238 Ledoux St, Taos
575-758-9826
harwoodmuseum.org

M



80

SOMOS

SOMOS is a literary organization serving northern New Mexico and beyond, supporting the spoken and written word through readings, classes, and much more.

tue-fri 12-4 pm
108 Civic Plaza Dr, Taos
575-758-0081
somostaos.org

O



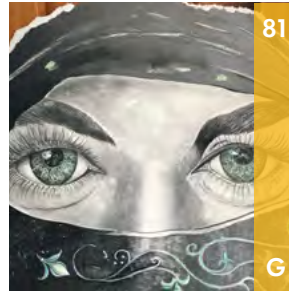
78

The Paseo Project

The Paseo Project is a non-profit arts organization that transforms art with community and community with art. Paseo presents projection, performance, and installation art year-round.

Taos, NM
575-425-0321
paseoproject.org

P



81

Studio 107-B

Exhibiting the finest multicultural, cutting-edge, and innovative art created in northern New Mexico. Focusing on art by Máye Torres and Isaiah Trujillo.

fri-mon 10:30 am-7 pm / by appointment
107-B N Plaza Dr, Taos
575-779-7832
studio107b.com

G



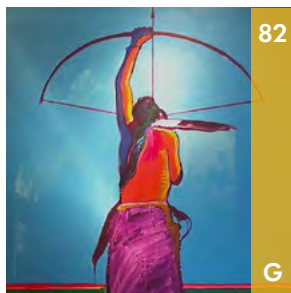
203
FINE ART

Early Modern to Contemporary

Open daily by appointment
1335 Gusdorf Rd Suite i . Taos . NM . 87571
575.751.1262 . art@203fineart.com . 203fineart.com

OTHER GALLERIES + DEALERS

SANTA FE, NM



Canyon Road Art Brokerage

Southwest and contemporary regional, Native American, historic, photography, notable art from collectors and local artists: Carl Schuman, Michael F. Wright, Ray Belcher, Nieto, Baumann, etc.
mon-sat 9 am-5 pm
Santa Fe, NM
505-577-4142
canyonroadartbrokerage.com



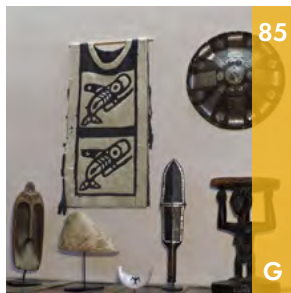
Carol Tippit Woolworth

Carol is an abstract narrative oil painter and papier-mâché artist working within a wide range of subjects, from figures to landscapes, hummingbirds to shrines.
by appointment
3 Calle Vecinos, Santa Fe
203-858-0987
caroltippitwoolworth.com



Plan B Arts

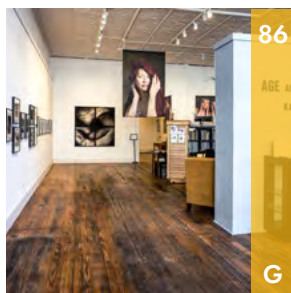
Featuring five Santa Fe artists: painters Beth Schmoher, Daniel Silverman, and Elizabeth Wiseman; jewelry artist Kathy Burhans; and photographic artist Stephen Robeck. Info at planbarts.com.
by appointment
Santa Fe, NM
805-223-5411
planbarts.com



TAD Tribal Art

After 31 years in our Santa Fe gallery, Tad Tribal Art—specializing in museum-quality tribal art from Africa, Oceania, the Americas, and beyond—now deals privately.
by appointment
Santa Fe, NM
505-670-3488
tadtribalart.com

SILVER CITY, NM



Light Art Space

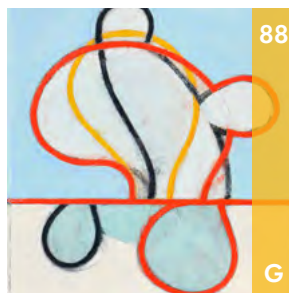
Located in historic downtown Silver City, this dynamic, contemporary art space explores diverse perspectives and ideas through art exhibitions, workshops, and other events.
thu-sat 10 am-5 pm / by appointment
209 W Broadway St, Silver City
520-240-7075
lightartspace.com

MAGDALENA, NM



kind of a small array

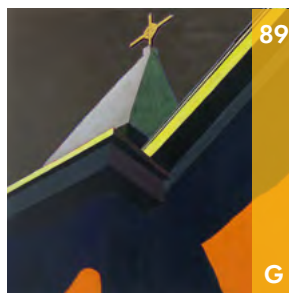
A humble space for art, poetry, and music.
fri-sun 11 am-3 pm / by appointment
106 N Main St, Magdalena
210-473-9062
facebook.com/kindofasmallarray



Warehouse 1-10

Warehouse 1-10 is a contemporary art space featuring work by regional, national, international established and emerging artists. See our website for openings and events.
by appointment
110 N Main St, Magdalena
575-854-3253
warehouse110.com

TRUTH OR CONSEQUENCES, NM



RioBravoFineArt

RioBravoFineArt represents contemporary fine art by regional and national artists, along with the legacy fine-art collection of H. Joe Waldrum, founder of the gallery.
wed-sun 12-5 pm
110 N Broadway St, T or C
575-894-0572
riobravofineartgallery.com

ART CONSULTING SERVICES

ART ADVISOR

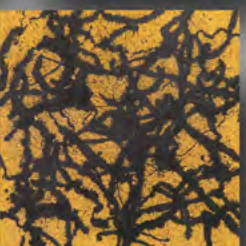


Ylisse Kessler Fine Art

Ylisse Kessler Fine Art offers long-standing expertise in art advisory, private art dealing, and collections management services. Complimentary consultation for buying or selling art.
by appointment
Santa Fe, NM
505-930-1039
ylissekessler.com

RioBravoFineArt[®], Inc.

A CONTEMPORARY AND HISTORIC FINE ART GALLERY

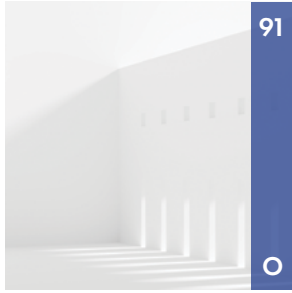


RioBravoFineArt[®] represents the art of:
Harold Joe Waldrum, Roy van der Aa, Martye Allen, Dave Barnett,
Delmas Howe, Noël Hudson, Katharine Kreisher, Leo Neufeld,
Gregory Montreuil, Susan Noreen, William Bertrum Sharp,
Joel Smith, Nolan Winkler

Gallery Hours: noon - 5 pm, Wed - Sun & By Appointment
110 N. Broadway St., Truth or Consequences, NM 87901
575-894-0572 www.riobravofineartgallery.com

ART ORGANIZATIONS

ASSOCIATIONS



91

Friends of Architecture Santa Fe

We are invested in cultivating a vibrant design culture and an equitable and sustainable future through provocative, inclusive dialogues about our shared built environment.

by appointment
Santa Fe, NM
architecturesantafe.org

EDUCATION



96

ARTsmart New Mexico

ARTsmart bridges Santa Fe's thriving arts community with public school students of all grade levels through its annual Visiting Artist Program.

mon-fri 10 am-4 pm
Santa Fe, NM
505-992-2787
artsmartnm.org



92

Glass Alliance New Mexico

Glass Alliance New Mexico is dedicated to promoting art glass in New Mexico; see our website for information on lectures, classes, events, galleries, and artist studios.

New Mexico, statewide
glassnm.org

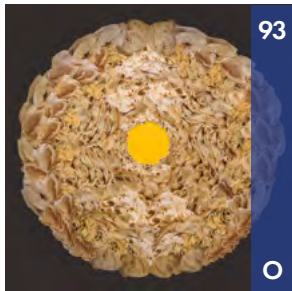


97

Santa Fe Woodturning Lab

Private design/craft workshops with master wood artist Laura Yeats.

by appointment
Galisteo, NM
505-705-1120
woodturninglab.com



93

New Mexico Women in the Arts

The NM State Committee of the National Museum of Women in the Arts champions NM women artists, furthering the museum's mission. Membership open to all.

Santa Fe, NM
505-467-8069
newmexicowomeninthearts.org

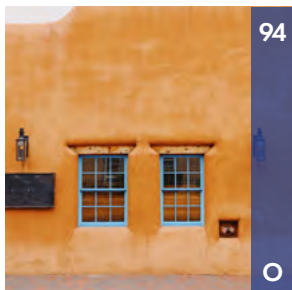


98

School for Advanced Research

A nationally recognized nonprofit dedicated to advancing creative thought and innovative work in the social sciences and fostering Native American arts and cultural heritage.

660 Garcia St, Santa Fe
505-954-7200
sarweb.org



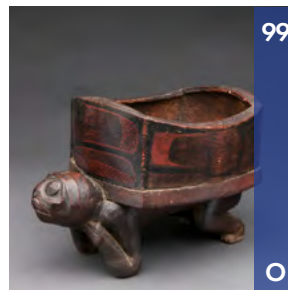
94

Santa Fe Gallery Association

SFGA represents art galleries, museums, and private dealers that offer a breadth of traditional and contemporary art by local, national, and international artists.

Santa Fe, NM
505-982-1648
santafegalleryassociation.org

FAIRS / FESTIVALS



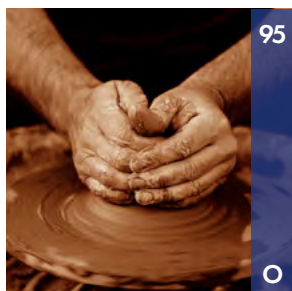
99

Antique Native Art Fair & Sale

An invitational art walk and sale. This will be a 5-day event of local galleries and visiting dealers selling antique/historic Native American and Tribal arts.

fri 1-7 pm / sat-mon 11 am-6 pm /
tue 11 am-4 pm
Santa Fe, NM
505-670-2447
santafeaugust2020.com

COLLECTIVES



95

Artico

A collective of local designers, artists, and makers promoting fine art and craft through events. Instagram: @artico.20.

Santa Fe, NM
505-705-1120
artico-20.org

FOUNDATIONS



100

Museum of New Mexico Fdn.

MNMF supports the Museum of New Mexico system through fundraising for exhibitions and education programs, retail and licensing programs, financial management, advocacy, and special initiatives.

Santa Fe, NM
505-982-6366
museumfoundation.org

LITERARY / MEDIA



101

Radius Books

A non-profit art book publisher. Our books and limited editions are on display and for sale in our downtown Santa Fe studio and online.

mon-fri by appointment
227 E Palace Ave, Santa Fe
505-983-4068
radiusbooks.org

RESIDENCIES



106

National Parks Arts Foundation

Non-profit arts foundation dedicated to providing artist opportunities in the National Parks. Many residencies with stipends open currently: Chaco Culture, Fort Union.

Santa Fe, NM
505-715-6492
nationalparksartsfoundation.org

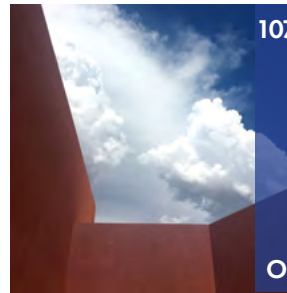


102

Santa Fe Art Experience

The definitive guide to finding art, galleries, events, and museums in Santa Fe.

Santa Fe, NM
505-467-8212
santafeartexperience.com

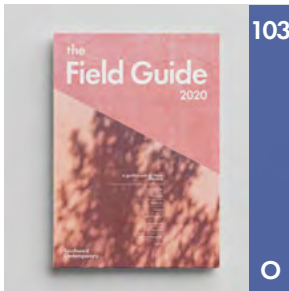


107

Santa Fe Art Institute

SFAI supports over seventy artists, activists, and creative practitioners annually through residencies, workshops, civic engagement, and innovative public events.

1600 St. Michaels Dr, #31, Santa Fe
505-424-5050
sfai.org



103

Southwest Contemporary

SWC is the leading resource for contemporary arts and culture in New Mexico through our print and digital publications, programs, and resources.

Santa Fe, NM
505-424-7641
southwestcontemporary.com



108

Women's Int'l Study Center

The Women's International Study Center inspires and enables women to achieve their goals through Fellowships-in-Residence at the Acequia Madre House.

by appointment
614 Acequia Madre, Santa Fe
505-983-6538
womensinternationalstudycenter.org

OTHER RESOURCES



104

Art-o-mat Vending Machines

Art-o-mat machines are repurposed cigarette machines that vend original works of art for \$5 with eight locations to visit in Santa Fe and Albuquerque.

Santa Fe and Albuquerque
505-795-1783
artomatnm.com

PERFORMING ARTS



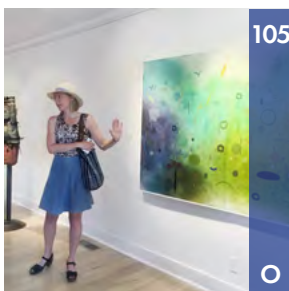
109

Performance Santa Fe

New Mexico's longest-running performing arts organization presents a year-long season featuring the world's most renowned artists and provides award-winning education programs.

mon-fri 9 am-5 pm
300 Paseo de Peralta, Ste 102, Santa Fe
505-984-8759
performancesantafe.org

TOURS / TRAVEL



105

Santa Fe Art Tours

Experience art in a new way on our interactive museum and gallery tours. Private and custom tours available. Now offering live online tours.

Santa Fe, NM
505-985-5298
santafearttours.com



110

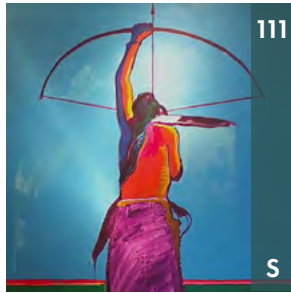
Theatre Santa Fe

Theatre Santa Fe is the umbrella organization for theatrical production companies in Santa Fe, with a website connecting companies, theater artists, and their audiences.

Santa Fe, NM
505-428-8508
theatresantafe.org

ART SERVICES

APPRAISALS



111

Barbara Beames

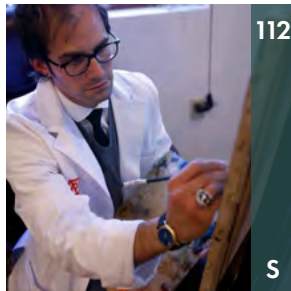
Barbara Beames and her experienced appraisal team at Canyon Road Art Brokerage provide highly accurate, USPAP-compliant, professional fine-art appraisals at fair, honest prices.

mon-fri 9 am-5 pm
Santa Fe, NM
505-577-4142

canyonroadartbrokerage.com

S

CONSERVATION



112

Revive Art Restoration

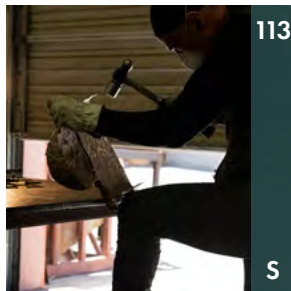
Revive Art Restoration specializes in the restoration and conservation of historic and contemporary paintings and other artworks.

mon-fri 9 am-5 pm
1600 Lena St, Ste B2, Santa Fe
505-216-0909

reviveartrestoration.com

S

FABRICATION



113

Rusty Mesa Bronze Studio

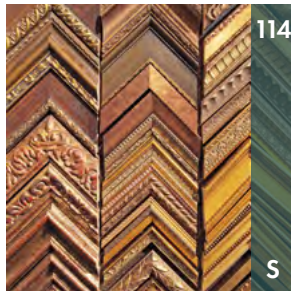
We offer a family of services at our bronze sculpture studio.

mon-fri 9 am-5 pm by appointment
7504 Avenger Wy, Ste A, Santa Fe
505-216-1649

rustymesa.com

S

FRAMING



114

Fine Art Framers Inc.

Dedicated to the highest level of conservation fine-art framing and expert design. Serving Santa Fe's museums, galleries, artists, and public since 1992.

mon-fri 10:30 am-5:30 pm
1415 W Alameda St, Santa Fe
505-982-4397

fineartframers.com

S



115

Gavin Collier & Co.

Custom picture framing since 1981. We frame each and every piece archivally, accentuating the artwork with appropriate design.

mon-fri 9 am-5 pm
815 Early St, Ste E, Santa Fe
505-982-9772

gavincollier.com

S

FRAMING



116

Get Framed

Fine art, posters, prints, custom picture framing, mirrors, canvas stretching, shrink wrapping, and all around framing needs.

mon-fri 10 am-5 pm / sat 11 am-4 pm
1403 Second St, Santa Fe
505-424-6996
raelobb@gmail.com

S

PHOTOGRAPHY



117

James Hart Photography

James Hart Photography has been serving the needs of artists, dealers, galleries, and museums for nearly thirty years.

mon-fri 9 am-5 pm by appointment
1410 Second St, Santa Fe
505-983-7945

S

PRINTING



118

Rush Creek Editions

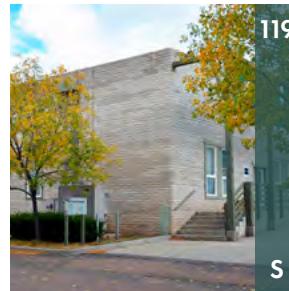
Rush Creek Editions is one of the premier digital fine-art printing studios in the United States, owned and operated by master printmaker Steve Zeifman.

mon-sat 10 am-6 pm by appointment
4002 Old Santa Fe Tr, Santa Fe
505-982-8293

rushcreekeditions.com

S

SHIPPING / HANDLING / STORAGE



119

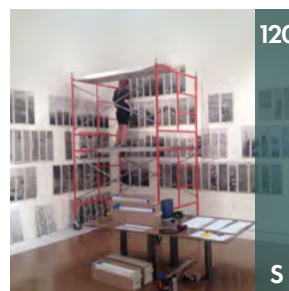
Astilli Fine Art Services

Providing professional, hands-on fine-art services and projects including collection management, storage, wrapping, crating, transport, and more since 1997.

mon-fri 10 am-5 pm by appointment
1807 Second St, Ste 101, Santa Fe
505-988-3505

astillifas.com

S



120

Level Fine Art Service

We move, install, pack, ship and store art for museums, interior designers, galleries, artists, and private collectors.

mon-fri 9 am-5 pm
1591 Pacheco St, Santa Fe
505-365-2677

levelfas.com

S



Rusty Mesa Bronze Studio

A family of Services
acting as a foundry

info@rustymesa.com
505-216-1649

To request an estimate
please visit www.rustymesa.com



@rustymesabronzestudio



@rustymesa

Artist: Djean JawRunner
"Horny Toad"

Photo Credit: UnderExposed



FINE ART FRAMERS

Archival Custom Framing Since 1992



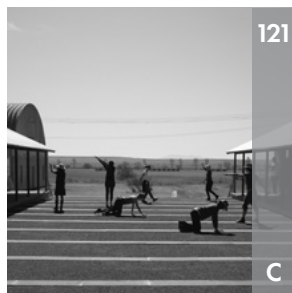
Proudly Serving
New Mexico's
Museums, Galleries,
Artists & Locals



1415 W. Alameda St. | Santa Fe 87501 | 505.982.4397 | www.fineartframers.com

CREATIVE PROFESSIONALS

COMMUNICATIONS



The METTA Agency

A public relations agency specializing in art and culture.

mon-sat 8 am-8 pm
Santa Fe, NM
505-490-5029
themettaagency.com

CONSULTING



Lauren Tresp Art Strategy

Offering business and marketing strategy and consulting for artists, arts businesses, and creative entrepreneurs. Call or visit my website to schedule your free discovery call.

by appointment
Santa Fe, NM
505-424-7641
laurentresp.com

DESIGN



Design Corps

Design Corps provokes design thinking and trans-disciplinary knowledge and practice to promote a more resilient Santa Fe.

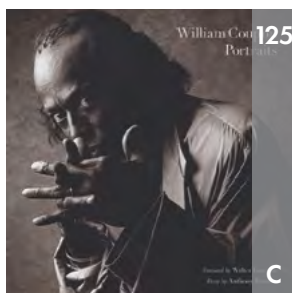
mon-fri 8 am-5 pm
Santa Fe, NM
505-603-3734
design-corps.org



Invisible City Designs

Founded by Alex Hanna in 2007, Invisible City Designs is an award-winning firm that specializes in high-quality print work, brand strategies, and marketing.

Santa Fe, NM
505-986-1453
invisiblecitydesigns.com



Michael Motley Studio

Divergent design for the creative community: books, catalogues, collateral, and propaganda for print and web.

mon-fri 9 am-5 pm
Santa Fe, NM
505-982-0355
michaelmotley.com

DESIGN



Park Slope Design

Landscape designer and artist Joan Grabel reinvents environments by designing with an artist's sensibility and applying eco-conscious design practices.

Santa Fe, NM
505-500-5891
parkslopedesign.com

PHOTOGRAPHY



Adrift a Dream Photography

Eclectic photographer focusing on portraits, branding, lifestyle, travel, and making the most of natural light.

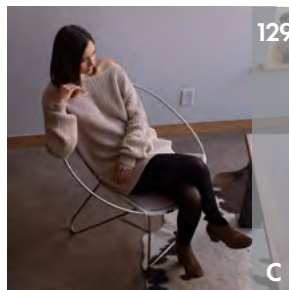
Albuquerque, NM
734-645-8407
adriftadream.photography



Narrative Media

A visual marketing studio that provides professional photography, video, and aerial.

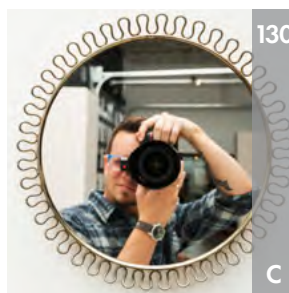
mon-fri 8 am-5 pm
3228 Richards Ln, Ste C, Santa Fe
505-303-3106
narrativesantafe.com



Rebel Media

Making you look brilliant: photography, video, website, and social media. Affordable, effective, and engaging marketing that's creative and fun!

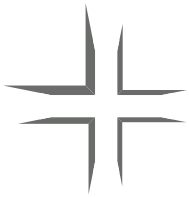
daily 10 am-5 pm
Santa Fe, NM
505-930-6277
rebelmedianm.com



Underexposed Studios

Underexposed is a commercial photography studio with services including studio and location photography, headshots, studio rental, scanning, retouching, giclee printing, and web design.

by appointment
436 Cerrillos Rd, Santa Fe
505-216-7646
underexposedstudios.com



INVISIBLE CITY DESIGNS

brand strategies

graphic design

marketing solutions

creative direction

Alex Hanna

invisiblecitydesigns.com

WILLIAM FREJ ROBERT STIVERS JAMEY STILLINGS
PETER OGLIVIE PHILIP METCALF DANNA BRACKENBURY
NIKI BOON KIM RICHARDSON SUSAN STELLA CAROLA CLIFT
HOWARD STEIN WILLIAM SIEGAL GALLERY ALEX TRAUBE
BARBARA MEIKLE PHOTOEYE NATALIE CHRISTENSEN
TERRY HEFFERNAN ROXANNE DARLING ROSETA SANTIAGO
NICOLE CUDZILO AMELIA BAUER TONY O'BRIEN
BEN NYE ABIGAIL ADLER STEVE BUNDY DAVID HALPERN
JUDY TUWALETSTIWA OBSCURA GALLERY SUSAN RESSLER
PATRICIA GALAHAN SITE SANTA FE ALESSANDRA HESS
KURT MARKUS WILLIAM CLIFT EDWARD KEATING
ALEXANDRA HUDDLESTON NEW MEXICO HISTORY MUSEUM
HOLT SMITHSON MARILYN MAXWELL CHARLENE TETERS
TOM MARTINELLI CHARLES GURD RADIUS BOOKS
MERIDEL RUBINSTEIN LAWRENCE FODOR ARTISANS
MARY PECK WILLIAM COUPON SCHEINBAUM & RUSSEK

AND MANY MORE

THE FINE ART OF PRINTING

BY

RUSH CREEK EDITIONS

WWW.RUSHCREEKEDITIONS.COM

Level

Fine Art Services

www.levelfas.com | 505-365-2677

WE INSTALL, STORE, PACK, SHIP
AND MOVE **ART** FOR MUSEUMS,
INTERIOR DESIGNERS, GALLERIES,
ARTISTS AND PRIVATE COLLECTORS.

Mention this ad for 10% off your next service

RIFT

gallery

CONTEMPORARY ART

- **EXCEPTIONAL 2D AND 3D CONTEMPORARY ART**
- **STONE CARVING CLASSES AND TOOLS**
saxstonecarving.com
- **FOUNTAINS, BENCHES, HAND-CARVED MEMORIALS**



Betsy Williams



Susu Knight



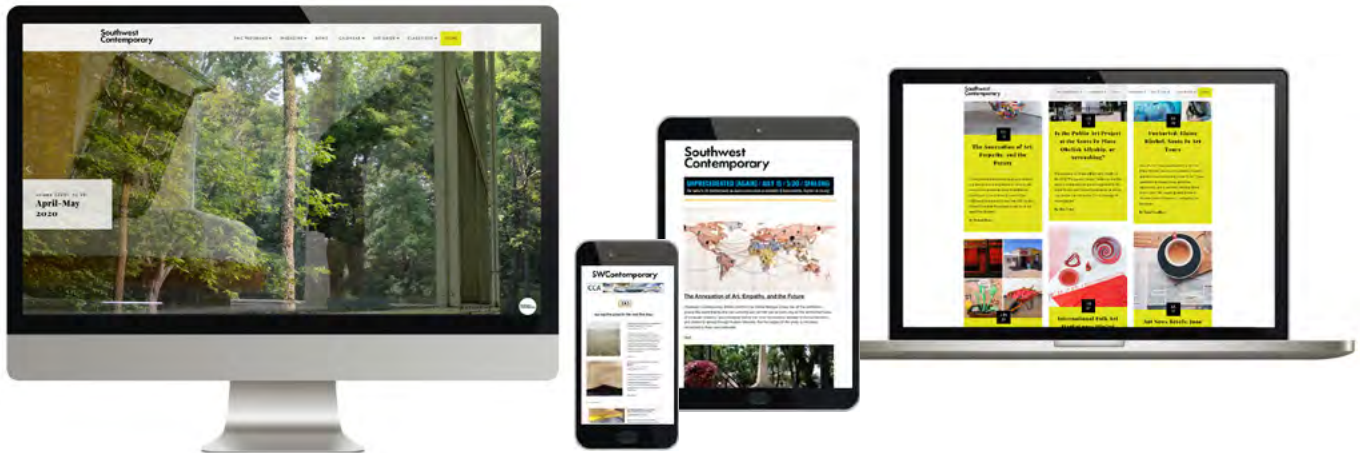
Mark Saxe

2249 NM 68 RINCONADA • 505.579.9179

RIFTGALLERY.COM

Southwest Contemporary


Curated and critical perspectives on arts and culture



SUBSCRIBE

southwestcontemporary.com/swc-newsletters

 [swcontemporary](https://www.instagram.com/swcontemporary)

 [swcontemporary](https://www.facebook.com/swcontemporary)



**ENDLESS
INSPIRATION**

One of the world's most important
Native American art collections is
NOW ONLINE.

School for Advanced Research
eMUSEUM

EMUSEUM.SARSF.ORG

EXPLORE HUNDREDS OF THE FINEST
EXAMPLES OF POTTERY, TEXTILES,
JEWELRY, AND PAINTINGS FROM
ACOMA, ZUNI, AND OTHER
SOUTHWESTERN COMMUNITIES.

School for Advanced Research | Santa Fe, New Mexico
EXPLORING HUMANITY. UNDERSTANDING OUR WORLD.



The Butler Did It



Distinctive Home and Business Cleaning Services

Galleries, Professional Offices, Beautiful
Homes in Santa Fe and Taos | **505.414.9743**

FEATURED NEW MEXICO ARTISTS

For our inaugural Field Guide publication, Southwest Contemporary invited artists from all corners of New Mexico to submit their work for inclusion in this special annual guidebook. These twenty-five artists were selected by a jury panel out of a group of 100 submissions, and their work gives you just a taste of some of the freshest art being made in this state in 2020!



Francisco Benitez

Santa Fe, NM
franciscobenitez.com

The main themes in my work are a focus on the recuperation of Old Master techniques and approaches, with a heightened awareness of contemporary art. I enjoy juxtaposing art styles from various periods to highlight the political contexts, gender roles, and psychological realities of the various human subjects.

We Are Not What We Once Were, 2019, oil on canvas, 24 x 20 in.

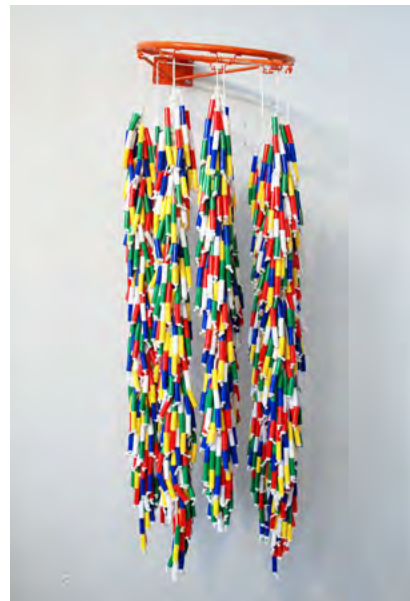


Janet Abrams

Santa Fe, NM
janetabrams.com

I'm an artist, writer, and producer/curator based in Santa Fe since late 2013. My studio practice includes mixed-media sculpture, drawing, and photography. While I generally hand-build my abstract ceramic sculptures, lately I've been focusing on casting as a means of capturing the textures of natural and man-made artifacts, to create rich surfaces in cast-bronze sculptures.

Taglio, 2017-18, bronze, 20 x 13 x 4 in.



Robbin Bates

Albuquerque, NM
robbinbates.com

Robbin Bates recently graduated from the University of New Mexico with an MFA in Painting and Drawing. Bates creates mixed-media works that focus on the materials, memories, subjects, and objects from her early childhood.

C'mon and Slam, 2020, basketball hoop, nylon rope, plastic beads, 41 x 12 x 15 in.

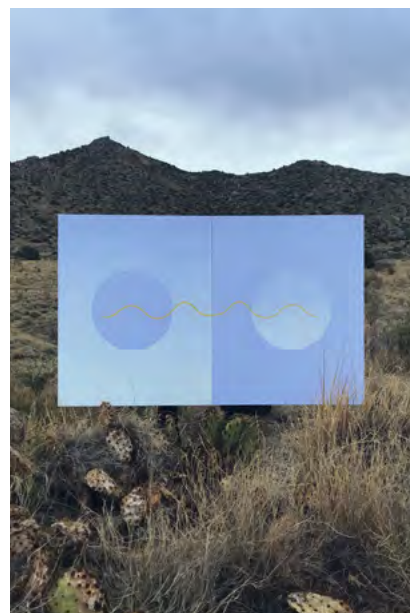


Jennifer Bain

Santa Fe, NM
jenniferbain.com

The landscape of New Mexico influences my painterly space and forms. The paintings aim to reveal the layers perceived in the earth, rocks, and landscape. There exists a constant shifting of space due to altitude. The light creates implausible colors.

Flandrian, 2019, acrylic, ink on panel, 20 x 16 in.



Robyn A. Frank

Albuquerque, NM
robynaf Frank.com

My work celebrates change, the cyclical duality of creation and loss. Drawing inspiration from New Mexico's big skies, varied hues, and celestial shapes related to the activity of transition, both emotional and physical; creating a space where the past, present, and future assemblages of our self culminate in vast possibility.

Unwavering connection—to have where you are, to have where you're going, you must have where you've been, 2020, acrylic on wood panel, diptych, 30 x 48 in.



Jenny Day

Santa Fe, NM
jennyday.com

Jenny Day's paintings are small, jesting complaints that begin in unease in the miscalibration between the fires—literal and figural—that we've unleashed, and the meagerness of our response to them. The absurdity of the modern world, and an absurdist humor, leavens an underlying despair.

Raging Kitten, 2020, acrylic, colored pencil, spray paint, flashe, glitter on canvas, 60 x 96 in.



Ali Launer

Corrales, NM
alilauner.com

Ali Launer combines luxurious precious and semiprecious stones, handmade Bali Sterling silver, and glass seed beads on the skulls of noble animals to create an impressive, signature style of art.

Peruvian Opal Ram, 2019, beads on bone, 15 x 31 x 7 in.



Tim Jag

Santa Fe, NM
timjagart.com

With the *Optical Drawings Series*, I am attempting to make nonobjective images using the bare minimum of process and materials. I think of it as a direct process on paper using only graphite pencils, compass, and straight edge, to create a primitive form of visual and optical graphics that relate to early forms of architectonic or geometric imagery.

Optical Drawing #32, 2020, graphite on paper, 30 x 44 in.



Ellen Jantzen

Santa Fe, NM
ellenjantzen.com

As an artist who uses photography as an art form, I am interested in states of reality. Because photos are “believed,” there is a great deal of room to play within photography's reality to create a personal fiction (a visual poetry) that is more open to interpretation.

Gallup Lakeside, from the series *Mid+West*, 2019.



Karen Hymer

Silver City, NM
karenhymer.com

My image making explores the blending of photosensitive materials, digital media, and printmaking. I am fascinated with how the passage of time affects the human body and other natural elements in the world.

Food & Flesh 1, 2015, photopolymer gravure, 10 x 8 in.



Marianne Hall

Albuquerque, NM
mariannehallartist.com

Marianne Hall is an abstract collage artist from Albuquerque, New Mexico. Hall weaves a story through intuitive mark-making. She stitches together delicate and vintage papers that bear marks made with Sumi ink and ink she brews herself from walnuts. Her layered abstracts are a metaphor for connection and relationship.

Changeable Sequence, 2018, Sumi and walnut ink on rice paper, stitched collage, 13 x 14 in.

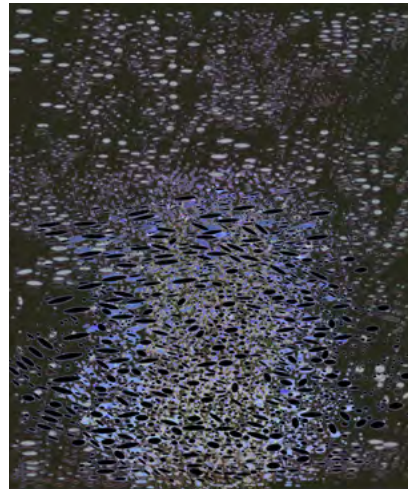


Marietta Patricia Leis

Albuquerque, NM
mariettaleis.com

My multimedia reductive visual practice is shaped out of experiments in material process and takes inspiration from the forms of nature, sense of place, and the internal landscape. *Fissures* reflects treeless, volcanic Iceland with its unobstructed views of the horizon.

Fissures, 2018, acrylic, birch wood, 36 x 22 x 3 in.



David Moss

Corona, NM
davidmossportfolio.com

While this work is insistently abstract with no direct descriptive references, it is my hope that the work, in some way, evokes the light, open space, wind, and ever-changing presence of the New Mexico landscape, and a sense of being both within and a part of that presence.

Phosphorous 2, 2020, digital pigment print, 38 x 35 in.



Dara Mark

Lamy, NM
daramark.com

Water, gravity, and intuition play their parts in my translucent paintings. The natural flow of watercolor is contained in balanced fields of color that invite contemplation and perhaps healing.

Forest Breathing #5, 2019, watercolor and thread on layered Yupo paper, 41 x 40 in.



Timothy Nero

Santa Fe, NM
timothynero.com

My work has been driven by my interest in the human mind, thought, consciousness, awareness, and ego. Meditation and the psychedelic 1960s have also influenced my interest and desire to visually describe how consciousness appears to me. I have a visual language that continuously cycles through my work.

Steel Toe Heart, 2019, acrylic, canvas, 54 x 42 in.



Jonathan Parker

Santa Fe, NM
jonathanparker.com

My work is painted, cut, and sewn canvas and fabric that is created from an organic abstract stance.

SC #236, 2020, acrylic on canvas, sewn, 14 x 11 in.



Kate Rivers

Santa Fe, NM
kateriversart.com

My work addresses issues of memory and loss. I collect ephemera and bits and pieces of paper, mementos from everyday life, and incorporate them into my work. I examine the things we hold on to in order to reclaim memories of our past.

It Takes a Village, 2020, oil, ephemera, and mixed media on canvas, 56 x 56 in.



Sherry Parker

Santa Fe, NM
sherryparkerart.com

My collages are made from deconstructed vintage materials— incongruously bringing together disparate images to create unexpected curious connections. Chance is my muse. My work reflects my playfully irreverent response to—or perhaps refuge from—the “furious folly” of these times.

Desert Lighthouse, 2020, mixed-media collage, 10 x 7.5 in.



Scott W. Parker

Santa Fe, NM
scottwparkerstudio.storenvy.com

I am living to make images in drawing, painting, and multiple-block linoleum block prints.

Moonlit, 2018, linoleum block print (five blocks in five states), 12 x 12 in. Ed of 40.



Carmen Ruiz

Silver City, NM
lightartspace.com/artists/carmen-ruiz

Originally from Argentina, Carmen Ruiz is a studio artist and bilingual art educator. All based on her life experiences, her balsa-wood/photo-transfer architectural monoprints are impressions of Buenos Aires. When a series is completed, Ruiz chooses to “cancel” her printing blocks by assembling them into 3-D constructions.

Urbana II, 2017, monprint woodblock series on heavy-weight, textured art paper, 19 x 11 in.



Alicia Smith

Albuquerque, NM
aliciasmith.work

Alicia Smith is a Xicana artist whose work uses the abject and sublime to investigate the tension between greed and reverence and its impact on the environment, as well as our relationships to the female body.

I Believe You, 2019, video and performance, 3:00.



Julie Shelton Snyder

Santa Fe, NM
julieshelton Snyder.com

I am a printmaker and painter. My current work is focused on traditional *mokuhanga* (woodblock printmaking). Expressing the ineffable and the invisible is the aim of my work, and I consider abstraction as the best means for this expression.

Two Stones, 2017, woodcut, 12.5 x 10.5 in.



J. Renee Tanner

Santa Fe, NM
jrenee Tanner.com

I work in series of installations made of collections of everyday items like gloves, shoes, stretch pants, sea shells, metal hardware—all cast-offs and discarded items destined for landfills. These installations are repeatable yet designed to be interchangeable or recombined into new site-specific compositions.

Glove Love, detail, 2020, salvaged cotton string gloves, thread, polyfil, 10 x 20 in, one of twenty multiple constructions.



Signe Stuart

Santa Fe, NM
signestuart.net

My abstract works on sewn canvas and paper are metaphorical slices of time and space... contexts for constructing ideas about the nature of nature.

Double Kare, 2019, acrylic and graphite on cut mulberry paper, 65 x 36 in.



John Vokoun

Santa Fe, NM
johnvokoun.com

I am a painter of contemporary meditations based on the influence of technology in our lives and minds.

Chaco Landscape, 2016, laser-cut acrylic paint on panel, 36 x 24 in.

the Art Calendar

NOTE: Due to the ongoing coronavirus pandemic, the events listed here are subject to change. Please confirm dates and times with the presenting organizations, and practice COVID-safe protocols.



Cannupa Hanska Luger, *Future Ancestral Technologies: We Survive You*, 2019, film still. Courtesy the artist. Luger's work is included in the exhibition *Displaced: Contemporary Artists Confront the Global Refugee Crisis* at SITE Santa Fe.

ONGOING EXHIBITIONS

Alexander Girard: A Designer's Universe

VIRTUAL EXHIBITION

on view through December 31, 2021

Museum of International Folk Art / Santa Fe

Alexander Girard was one of the most influential interior and textile designers of the 20th century. The virtual exhibition *Alexander Girard: A Designer's Universe* is the first major retrospective on his work. It opens a door to his creative universe and shows his close relationships with contemporaries. internationalfolkart.org.

Diego Romero vs. the End of Art

EXHIBITION

on view through January 2, 2021

Museum of Indian Arts & Culture / Santa Fe

For decades, California-born Cochiti potter Diego Romero has created renowned historical and autobiographical artworks. Acclaimed for his neo-Mimbres pottery illustrating Pueblo Indian history, his father's Korean War stories, and his relationships with women, family, substances, and art, Romero's work lays bare the life of one Native artist and Native history. miaclab.org.

Discover The Art of Wax

EXHIBITION

July 15, 2020 -ongoing

Museum of Encaustic Art / Santa Fe

The Museum of Encaustic Art features over 200 works of art in the medium of encaustic wax and cold wax in the largest collection of encaustic/wax art in the nation. Discover why this medium is the fastest growing in the nation. Both 3-D and 2-D works are represented. Adult and children's workshops also available. moeart.org.

Displaced: Contemporary Artists Confront the Global Refugee Crisis

EXHIBITION

mid-July-December 2020

SITE Santa Fe / Santa Fe

Focusing on human migrations and displacements of the past, present, and future, *Displaced* features artists from around the globe who foreground forgotten histories, ask us to bear witness to the highest levels of human displacement on record, and imagine futures where migration is essential for survival. sitesantafe.org.

Global Warming is Real

VIRTUAL EXHIBITION

June 20, 2020-ongoing

Encaustic Art Institute / Santa Fe

Fourth annual *Global Warming is Real*, a national juried exhibition, has moved online. Thirty artists creatively interpret their thoughts and feelings on the subject of climate change through the medium of encaustic/wax. Juror Diane Burko, a renowned artist/activist who brings together the seemingly disparate practices of art and science, shares a video. All work is for sale. ainm.com.

Nicola López: Haunted

EXHIBITION

on view through 2020

Albuquerque Museum / Albuquerque

Artist Nicola López's site-responsive installation reflects on how all landscapes are now and forever haunted by our inescapable, human presence. The Albuquerque Museum Visiting Artist Program is supported in part by a grant from the Frederick Hammersley Foundation. cabq.gov/museum.

Renaissance 20/20

EXHIBITION

July-December 2020

Studio 107-B / Taos

Renaissance 20/20 is a global artistic event where artists worldwide exhibit their finest work in galleries and public places throughout the world. All artists are invited to create their own dynamic, event/happenings, individually or in groups, inspiring a global artistic movement. studio107b.com.

Trinity: Reflections on the Bomb

VIRTUAL EXHIBITION

on view through 2020

Albuquerque Museum / Albuquerque

Online exhibition at cabq.gov/trinity. Albuquerque Museum presents artists' responses to the first detonation of a nuclear weapon near Alamogordo, New Mexico, coinciding with the 75th anniversary of the Trinity explosion. cabq.gov/museum.

Voices of the Clay: San Ildefonso

EXHIBITION

on view through August 31, 2020

Museum of Indian Arts & Culture / Santa Fe

San Ildefonso pottery is about a little known art, an American art form that deserves recognition and appreciation alongside the other great world art systems. miaclab.org.

Word Play

EXHIBITION

February 8, 2020-February 21, 2021

New Mexico Museum of Art / Santa Fe

This exhibition of more than forty works of art in a variety of media features images by artists who incorporate letters, words, and phrases into their visual creations. nmartmuseum.org.

AUGUST

Infinite Beauty: On the Move

VIRTUAL EXHIBITION

July 17-August 17, 2020

Patina Gallery / Santa Fe

Infinite Beauty exhibits an array of treasures from Hildesheim, Germany imagined by legacies of handcrafted art: Ulla and Martin Kaufmann. The artists reveal jewelry works and objects of fine art that propelled them as significant, influential innovators during the height of the 20th-century craft movement. patina-gallery.com.

RESET

VIRTUAL EXHIBITION

opening: July 30, 2020, 5:30 pm

birds + Richard / Albuquerque

“In times of crisis, we must all decide again and again whom we love.”—Frank O’Hara. “Taking care of each other begins with understanding the differences.”—Rebecca Solnit. Today we face a catastrophe, a tragic pandemic, which since its beginning in December 2019 has spread fast across the world. birds-richard.xyz.



Reset, installation view, 2020, birds + Richard, Albuquerque. Reset is a virtual and physical exhibition including work by more than twenty local, national, and international contemporary artists.

Mikayla Patton & Hollis Chitto

EXHIBITION

opening: July 31, 2020, 6 pm

Hecho a Mano / Santa Fe

Beadwork connects the art of mixed-media artist Mikayla Patton (Oglala Lakota) and jeweler Hollis Chitto (Choctaw/Laguna/Isleta). Patton uses handmade paper as a starting point for two- and three-dimensional objects while Chitto’s work is functional and wearable. hechoamano.org.

Summer Group Exhibition

EXHIBITION

opening: Fri, July 31, 10 am-5 pm

July 31-September 19, 2020

Evoke Contemporary / Santa Fe

This exhibition emphasizes art in a variety of media that displays superlative examples of the ten exhibiting artists’ most uplifting and inspiring work paying homage to nature. Bringing together iconic works by these celebrated artists will be a refreshing start to Summer 2020 in Santa Fe. Virtual tour available for all exhibitions.

evokecontemporary.com.

RESET | Physical Exhibition

EXHIBITION

opening: August 2, 2020, 4 pm

birds + Richard / Albuquerque

In every crisis there is also a chance for improvement. Right now, we all feel sensitive about what is happening around us, and have more time to look into our environments and rethink our standing in the world. The exhibition *Reset* offers an opportunity for developing new perspectives on micro and macro levels concerning individual and collective prospects. birds-richard.xyz.



Papermaking and Printmaking: Artist Talk with Mikayla Patton

TALK / LECTURE

August 6, 2020, 5:30 pm

School for Advanced Research / Santa Fe

Mikayla Patton (Oglala Lakota) presents her practices and current projects as the School for Advanced Research’s 2020 Ronald and Susan Dubin Native Artist fellow. In her talk, Mikayla will explore her processes of bookmaking and small installation work which use Lakota line designs and symbols, referencing traditional forms of quillwork and beadwork. Virtual event: register online.

sarweb.org.

James Sterling Pitt a punching bag and an ocean

EXHIBITION

August 7-September 25, 2020

5. Gallery / Santa Fe

spointgallery.com.

Contemporary Native Art Group Exhibition

EXHIBITION

August 8-September 5, 2020

Chiaroscuro / Santa Fe

Annual group show featuring: Rose B. Simpson, Emmi Whitehorse, Rick Bartow, Harry Fonseca, Jeff Kahm, Neal Ambrose-Smith, Mikalya Patton, Yatika Starr Fields, Duane Slick, Lisa Holt, and Harlan Reano. chiaroscurosanatafe.com.

Santa Fe—August 2020 Native & Tribal Art Fair

FAIR / FESTIVAL

Aug 14, 1-7 pm / Aug 15-17, 11 am-6 pm / Aug 18 11 am-5 pm

various locations / Santa Fe

Santa Fe–August 2020 Native & Tribal Art Fair is an invitational walk and sale; a 5-day event of local galleries and visiting exhibitors to be showing throughout Santa Fe. Offerings will include fine historic Native American, World Tribal, Folk, and fine art and antiques. Participants are showing at various locations around town to provide a COVID-19-safe environment. santafeaugust2020.com.

Indian Market 2020: Bigger, Bolder, Virtual

EXHIBITION

August 15, 2020, 10 am

King Galleries / Santa Fe

Featuring new works by gallery artists. Susan Folwell, Les Namingha, Juan de la Cruz, Tammy Garcia, Chris Youngblood, Jennifer Tafoya, Jeremy Frey, and others. kinggalleries.com.

Zobel Fest 2020

VIRTUAL EXHIBITION

August 14-23, 2020

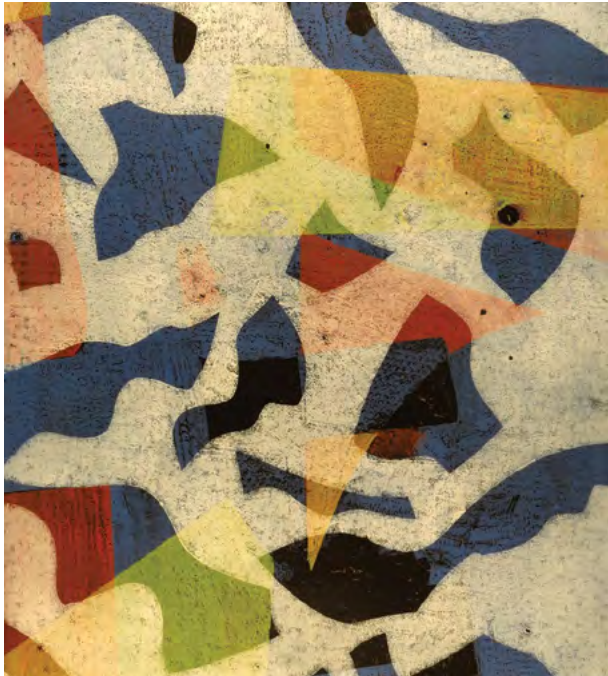
Patina Gallery / Santa Fe

Online, all day. The gallery will also be open to view works 1-5 pm. This summer, Patina celebrates its 20th anniversary of exhibiting and collaborating with prominent German jewelry artist Peter Schmid of Atelier Zobel. Join in an unveiling of virtual events, from a tour of the Atelier to an exclusive interview series with the artist, and discover pieces never before seen in Santa Fe. The exhibition is mainly virtual, although there will be a soft staging of works in the gallery.

patina-gallery.com.

MAUREEN MAY

PRINTMAKING • DRAWING • SCULPTURE



MAUREENMAYART.COM • 970-259-0176
@THEMAUREENMAY

GVG

contemporary

GVG Contemporary lives on!
We have relocated to our warehouse space in the Siler Rufina Arts District | Open by Appointment
call 505.982.1494 | text 505.629.3075
or visit us at gvgcontemporary.com

The Ark Bookstore
seriously soulful

Celebrating 38 Years!
133 ROMERO STREET, SANTA FE 505-988-3709
Located in the Railyard behind REI
www.arkbooks.com

Get listed in the Field Guide!

June 2021

Discover print and digital advertising solutions:
southwestcontemporary.com/advertise

Tom Dixon: New Works

EXHIBITION

August 15-27, 2020
203 Fine Art / Taos

A solo exhibition of new work by Tom Dixon. In this new series, Dixon uses subtractive processes to create texture and complexity. He paints the most interesting compositions, only to cover them with opaque, gestural brush strokes. He then deconstructs the surface to uncover the original compositions. 203fineart.com.

Michael Fitzhugh Wright: A Retrospective: East Hampton 1964—Santa Fe 2020

VIRTUAL EXHIBITION

opening: Fri, August 21, 2020, 10 am
Canyon Road Art Brokerage / virtual

Michael Wright's abstract paintings, expressionistic with strong compositions, color, and mesmerizing gestural lines, reflect his exceptional vision of nature through lyrical imagery. Friend of Jackson Pollock, Franz Kline, etc. in the famous days of the Cedar Bar and Eighth Street Art Club. Assisted Willem de Kooning in East Hampton, 1964.

canyonroadartbrokerage.com.

ReVisioning: Preservation

TALK / LECTURE

Thu, Aug 27, 2020, 5:30 pm

Friends of Architecture Santa Fe / virtual until further notice

An interactive panel discussion on creating an equitable and sustainable Santa Fe, through re-examining the visions that have historically guided the city's plans for the future. What are the myths and origins of Santa Fe style? Whose history and culture are we preserving, and whose are we excluding or erasing? architecturesantafe.org.

Vicente Telles

EXHIBITION

August 28-September 27, 2020
Hecho a Mano / Santa Fe

Vicente Telles is a *santero* (painter of saints) and cultural iconographer who is driven by the desire to honor the culture and traditions of his native New Mexico. hechoamano.org.

A Fiery Light: Will Shuster's New Mexico

EXHIBITION

August 29, 2020-May 1, 2021
New Mexico Museum of Art / Santa Fe

In 1920, serious health issues brought William Shuster to New Mexico, kicking off forty-nine years



Kent Williams, *Convergence: Yumiko*, oil on linen, 60 x 60 in. *Soey Milk // Kent Williams* is on view at Evoke Contemporary September 25-October 24, 2020.

of creativity, exploration, and engagement. Almost immediately he integrated himself into Santa Fe's burgeoning bohemian art scene, and made a reputation for himself as an eccentric and passionate member of the community with an unsurpassed lust for life. nmartmuseum.org.

SEPTEMBER

Matthew McConville: Flowers for the Anthropocene

EXHIBITION

September 9-October 23, 2020
reception: September 26, 2020, 6 pm
Richard Levy Gallery / Albuquerque

A solo exhibition of fantastical paintings inspired by images of jellyfish, plant life, viruses, and root balls. Painted in hyperrealistic style, the works are a visual exploration of how gene sequencing and editing can lead to scientific surprises, including the potential to recreate extinct organisms.

levygallery.com.

Emmi Whitehorse

EXHIBITION

September 11-October 10, 2020
Chiaroscuro / Santa Fe

Solo exhibition featuring new cohesive body of artwork from established abstract painter Emmi Whitehorse. chiaroscurosantafe.com.

Scott Greene and Walter Robinson

EXHIBITION

September 11-October 11, 2020
opening: Fri, September 11, 5-7 pm
Turner Carroll Gallery / Santa Fe

Scott Greene and Walter Robinson are New Mexico artists working in the big themes: the natural world, and its relationship to the built environment. Scott's and Walter's works crash together brilliantly in a kind of "unnatural selection." turnercarrollgallery.com.

Soey Milk // Kent Williams

EXHIBITION

September 25-October 24, 2020
opening: Fri, September 25, 10 am-5 pm
Evoke Contemporary / Santa Fe

Soey Milk and Kent Williams present a first time event—a doubleheader exhibition which is a co-mingling of creative thought and inspiration, where each has been stimulated and motivated by the intellectual and emotional depth of their partner. Virtual tour available for all exhibitions.

evokecontemporary.com.

OCTOBER

Ray Belcher Photographs: Not Man Apart

VIRTUAL EXHIBITION

opening: October 2, 2020
Canyon Road Art Brokerage / virtual

"I believe in the primacy of seeing. Seeing what is, and what may be. Seeing through time, as it passes, becoming. Mountains, clouds streaming, as butterfly dreams."—Ray Belcher.

canyonroadartbrokerage.com.

Careful of Your Words

EXHIBITION

October 9-November 20, 2020
5. Gallery / Santa Fe

spointgallery.com.

Panel Discussion: Women Curate Women

TALK / LECTURE

Fri, October 9, 2020, 6 pm

516 Arts / Albuquerque / virtual
until further notice

Join curators of woman-centered exhibitions across NM: Andrea R. Hanley, *Feminisms* (516 ARTS), Mary Statzer, *Indelible Ink: Native Women, Printmaking, Collaboration* (UNM Art Museum); Mari-sa Sage, *Labor: Motherhood in Art in 2020* (NMSU Art Museum); and Lucy Lippard, *Feminist Art in the Age of Trump* (Axle Contemporary). Register: viola@516arts.org. 516arts.org.

Contemporary Art / Taos at 203

EXHIBITION

October 10-November 30, 2020

203 Fine Art / Taos

Held in conjunction with the Contemporary Art / Taos 2020 survey organized by the Harwood Museum of Art, this annex exhibition will feature several artists selected for the juried main exhibition. A portion of the proceeds will benefit the acquisition fund of the Harwood Museum. 203fineart.com.

ReVisioning: Housing

TALK / LECTURE

Thu, Oct 22, 2020, 5:30 pm

Friends of Architecture Santa Fe / virtual until further notice

An interactive panel discussion on creating an equitable and sustainable Santa Fe, through re-examining the visions that have historically guided the city's plans for the future. What are the lessons of housing development from the last seventy years? What is an effective, equitable, and sustainable housing strategy for the next seventy?
architecturesantafe.org.

PechaKucha Santa Fe Volume 8: Ghosts

TALK / LECTURE

Wed, October 28, 2020, 6 pm

Friends of Architecture Santa Fe / virtual until further notice

The art of concise storytelling organized by a central theme. Each speaker is allotted 6 minutes and 40 seconds—twenty images, 20 seconds each. What haunts you? How has it shaped the path you have taken? How have you accepted, embraced, or exorcised the ghosts in your house?
architecturesantafe.org.



Ward Russell, *Pretzel Tree*, Mdina, Malta, 2020. The exhibition *Winter Show: Iconic Images From the Archives* will open on November 27, 2020, at Ward Russell Photography and will include photographs from the artist's travels to South Africa, New Zealand, Russia, Mexico, and the Mediterranean Isles.

Gugger Petter // Aron Wiesenfeld

EXHIBITION

October 30-November 21, 2020

opening: Fri, October 30, 10 am-5 pm

Evoke Contemporary / Santa Fe

Gugger Petter, Danish artist and master of her distinctive medium, weaves news of the day into her work creating an embedded diary in her portraits using newspaper as her medium. Aron Wiesenfeld's poetic compositions are windows into an autonomous world that continues off the edges of his canvases, triggering stories in the imagination. Virtual tour available for all exhibitions.
evokecontemporary.com.

NOVEMBER

516 Words: Luci Tapahonso, Layli Long Shoulder & Edie Tsong

TALK / LECTURE

Fri, November 6, 2020, 6 pm

516 Arts / virtual until further notice

Everyone is invited to a 516 Words literary reading featuring luminaries Luci Tapahonso (Navajo), Layli Long Shoulder (Oglala Lakota) and Edie Tsong (Taiwanese American) in conjunction with *Feminisms*, an exhibition at 516 Arts presented in partnership with the Wheelwright Museum of the American Indian and the Feminist Art Coalition. Register: viola@516arts.org. 516arts.org.

VOCES8

PERFORMANCE

Fri, November 6, 2020, 8 pm

Cathedral Basilica of St. Francis of Assisi
/ Santa Fe

Internationally acclaimed British vocal ensemble VOCES8 demonstrates the sheer beauty of voices in harmony through a vast range of repertoire written for churches, courts, and concert halls alongside folk, jazz, and pop arrangements. The result is a rare mix of the ethereal and pure, toe-tapping fun.
performancesantafe.org.

Rusty Scruby: New Work

EXHIBITION

November 20-December 15, 2020

Turner Carroll Gallery / Santa Fe

For the past ten years, Scruby's work has focused increasingly on structure and the interaction between structure and image. The combination of hand-crafted and analytical aspects in his work creates tension. The resulting emotional expression stems from this interaction of limited parameters, similar to numbers in music and knit and purl in knitting.
turnercarrollgallery.com.

Seth Armstrong

EXHIBITION

November 27-December 19, 2020

opening: Fri, November 27, 10 am-5 pm

Evoke Contemporary / Santa Fe

It's the Dutch Renaissance that explains Seth Armstrong's particular love for the so-called Magic Hour, though it is a Southern California hallmark. His accomplishments as a colorist also derive from this influence, informing his technique of underpainting which imparts his scenes with a perceptible glow verging on the light-box in intensity. Virtual tour available for all exhibitions.
evokecontemporary.com.

Winter Show: Iconic Images From the Archives

EXHIBITION

opening November 27, 2020, 1 pm

Ward Russell Photography / Santa Fe

Ward Russell's *Winter Show* presents black-and-white and color images from his thirty-year photographic career exploring the cultures, lands, and people of the world: South Africa, New Zealand, Russia, Argentina, Mexico, and the Mediterranean Isles. Some you might have seen before, but many that you will have not. wardrussellphoto.com.

DECEMBER

ReVisioning: Sustainability

TALK / LECTURE

Thu, Dec 10, 2020, 5:30 pm

Friends of Architecture Santa Fe / virtual until further notice

An interactive panel discussion on creating an equitable and sustainable Santa Fe, through re-examining the visions that have historically guided the city's plans for the future. What is the history of climate-adapted design in Santa Fe? How can design and planning for reduced carbon emissions also strengthen equity, and social and economic resilience? architecturesantafe.org.

Spanish Harlem Orchestra: Salsa Navidad

PERFORMANCE

Fri, December 11, 2020, 7:30 pm

Lensic Performing Arts Center / Santa Fe

There's no easing you in with Spanish Harlem Orchestra—they come at you full force from start to finish. Led by pianist Oscar Hernández, this three-time Grammy Award-winning Latin Jazz band sets the gold standard for excellence in authentic, New York-style, hard-core salsa.

performancesantafe.org.



The Spanish Harlem Orchestra, presented by Performance Santa Fe, comes to the Lensic Performing Arts Center in Santa Fe on December 11, 7:30 pm. Photo courtesy PSF.

Michael Scott

EXHIBITION

December 26, 2020-January 23, 2021

opening: Fri, December 26, 10 am-5 pm

Evoke Contemporary / Santa Fe

Michael Scott's current series of paintings, *Preternatural*, presupposes the miraculous in the mundane and the supernatural in the unobserved phenomena of the forests, plains, and mountains around us. Scott chooses not to restrict the landscape, but seeks to know the unknowable, to weave a story that suggests what is happening just out of sight. Virtual tour available for all exhibitions.

evokecontemporary.com.

2021

PechaKucha Santa Fe Volume 9: Resolution

TALK / LECTURE

January 2021

Friends of Architecture Santa Fe / location TBD

The art of concise storytelling organized by a central theme. Each speaker is allotted 6 minutes and 40 seconds—twenty images, 20 seconds each. How do you find purpose or resolve? What are the measures that bring clarity to your work, your process?

architecturesantafe.org.

PechaKucha Santa Fe Volume 10: Flow

TALK / LECTURE

April 2021

Friends of Architecture Santa Fe / location TBD

The art of concise storytelling organized by a central theme. Each speaker is allotted 6 minutes and 40 seconds—twenty images, 20 seconds each. You forget your surroundings and your ego to become the task at hand. How did you get here? What is your system, your technique?

architecturesantafe.org.

ARTsmart's Edible Art Tour

BENEFIT / FUNDRAISER

June 11-12, 2021, 5-8 pm

various Canyon Road and Downtown Santa Fe Galleries

ARTsmart New Mexico's popular Edible Art Tour is a 2-night festival of great art and gastronomical delights. Walk and eat your way from gallery to gallery tasting food from Santa Fe's best restaurants and caterers (Canyon Road galleries on Friday, downtown galleries on Saturday). Visit ARTsmartNM.org for tickets, maps, and info.

PechaKucha Santa Fe Volume 11: Boundaries

TALK / LECTURE

July 2021

Friends of Architecture Santa Fe / location TBD

The art of concise storytelling organized by a central theme. Each speaker is allotted 6 minutes and 40 seconds—twenty images, 20 seconds each. Real or imagined, prescribed or self-imposed, let us explore how boundaries can protect, support growth, or provide edges to push against.

architecturesantafe.org.

The Mediterranean Isles, 'til COVID-19

EXHIBITION

2021 dates TBD

Ward Russell Photography / Santa Fe

Ward Russell presents stark, black and white images of the people, cultures, and landscapes of Malta, Sicily, and Sardinia, taken before he fled back to Santa Fe as the islands locked down because of COVID-19. His images show not only sweeping vistas of ancient cities, and bronze age ruins, but the eerie foreboding of emptying streets and buildings. wardrussellphoto.com.

ARTsmart's Art of Home Tour with Keller Williams SF

BENEFIT / FUNDRAISER

April 10-11, 2021, 12-4 pm

various KW-listed homes in Santa Fe County

Love art? Love to tour homes? Keller Williams Santa Fe joins ARTsmart and Santa Fe's best art galleries to fill listed homes with beautiful artwork to enjoy on this free self-guided tour weekend (suggested \$5 per person donation). Artwork is for sale with 10% of proceeds benefiting ARTsmart. Maps and info online. artsmartnm.org.

Looking for more art events?

See more at southwestcontemporary.com/events

Art openings, talks, performances, workshops, and virtual events are added daily!





Southwest Contemporary



ABOUT SOUTHWEST CONTEMPORARY

Southwest Contemporary is the leading resource for contemporary arts and culture in New Mexico. We publish curated and critical perspectives on contemporary arts and culture in New Mexico and the greater American Southwest, support New Mexico artists and arts organizations through our print and digital platforms, and host local arts events, including our salon series showcasing local creators.

PUBLICATIONS + NEWSLETTER

Due to the various effects of the pandemic and its economic fallout, Southwest Contemporary will publish digitally only for the remainder of 2020, with strong and sincere plans to relaunch our print magazine in 2021. We invite you to subscribe to our newsletters to receive our weekly digital content! The SWC Weekly newsletter delivers articles, news, opportunities, and other updates you need to know about in New Mexico arts. Our fan-favorite Weekly 5x5 ("five New Mexico art events for the next five days") delivers all the must-see and must-do events and exhibitions you need to make your weekend plans (including virtual events you can tune in to from anywhere!). Sign up: southwestcontemporary.com/swc-newsletters.

ONLINE RESOURCES

Art Calendar — Our online art event calendar features talks, lectures, exhibition openings, fairs, benefits, performances, and more from across New Mexico, and is updated with new events daily! Visit southwestcontemporary.com/events.

Art Guide Digital Directory — A searchable digital directory of arts businesses, organizations, services, and more. Similar to the Field Guide, but updated on a rolling basis! Visit southwestcontemporary.com/art-guide.

Classifieds — Our classifieds platform lists calls for artists, artist residencies, grant opportunities, job openings in the creative sector, studio spaces available, and more. View a listing or post an opportunity at southwestcontemporary.com/classifieds.

Southwest Contemporaries Facebook Group — Artists from throughout the Southwest are invited to join a new online forum and community, Southwest Contemporaries. Join the group on Facebook to discover resources, share knowledge, and find a community of your peers focused on building sustainable careers as creators: facebook.com/groups/swcontemporaries.

SUPPORT SWC

Southwest Contemporary is supported by advertisers and readers, like you. For a long time, advertising was the lifeline of print magazines, but as our advertisers have been greatly affected by the COVID-19 pandemic, and as the media industry (especially for independent publishers) continues to experience disruption, magazine business models increasingly depend on communities of readers for support.

If independent media dedicated to local and regional arts and culture is important to you, please consider donating! Every donation helps ensure our sustainability and independence. Make a one-time or recurring donation at: southwestcontemporary.com/support-sw.

MARKETING + ADVERTISING SOLUTIONS

SWC brings culture creators together with culture consumers. Annually, our print and digital publications reach a local, national, and international audience of 220,000+. Partner with us on ad print or digital ad programs and consult with us on marketing strategy and campaigns to position your organization at the forefront of the art market in the Southwest. Contact us: sales@southwestcontemporary.com.

CONTACT

Lauren Tresp, owner, publisher, editor
lauren@southwestcontemporary.com

Daisy Geoffrey, editorial assistant,
marketing manager
daisy@southwestcontemporary.com

general inquiries
info@southwestcontemporary.com


pitches and press kits
editor@southwestcontemporary.com


marketing and advertising solutions
sales@southwestcontemporary.com

call
505-424-7641

write
369 Montezuma Ave, PMB 258
Santa Fe, NM 87501

FOLLOW

 [/swcontemporary](https://www.facebook.com/swcontemporary)

 [@swcontemporary](https://www.instagram.com/swcontemporary)

FIELD GUIDE

To order additional print copies of the Field Guide 2020, or to download this publication as a PDF, visit our online store: southwestcontemporary.com/store.

To advertise in the Field Guide 2021 (published June 2021), you can reserve your listing or ad space now: southwestcontemporary.com/advertise.

hunt modern

20th Century Design

